



## Drum Motor Catalogue Edition 2

Integrated Conveyor Drives

[www.southquip.co.nz](http://www.southquip.co.nz)

0800 741 241

## This Catalogue

All reasonable care has been taken to ensure the accuracy of the information contained herein. All specifications, pictures, descriptions and dimensions are nominal and may change without notice. Design and sizes are subject to change without notice. The brand and logo of Axis are registered trademarks of Southquip Industrial.

## Warranty

Any warranty period is as agreed at time of sale. All Axis equipment must be used for the appropriate application as at time of purchase. Loads must not exceed stated ratings. In the event of failure to adhere to the recommendations we will not take any responsibility for any damage caused by misuse. Under no circumstance will Southquip be liable for any loss, damage, expense, injury or consequential damage sustained as a result of non-suitability of any product for its intended use.

## Terms and Conditions

The supply of goods and services is subject to our standard terms and conditions of sale which are available upon request. Southquip reserves the right to state payment terms.



[www.southquip.co.nz](http://www.southquip.co.nz)

Free Phone 0800 741 241

Phone +64 3 218 4168

Fax +64 3 218 4164

Email [sales@southquip.co.nz](mailto:sales@southquip.co.nz)

## About Axis

In the modern production environment, reliability, efficiency and reduced maintenance costs are key to remaining competitive and profitable. To keep your work flows and systems at optimum productivity, nothing is more critical than the conveyor drive. They drive your production through value adding stages, reduce manual handling and improve profitability.

The Axis range of Drum Motors and Motorised Pulleys enable more modular conveyor systems for faster construction and installation. The motors are a single, enclosed and compact component which replaces previously complex and bulky drive systems. With high ingress protection ratings, they are unaffected by outside influence. This reduces maintenance requirements and prolongs the life of the drive. Axis Drum Motors create safer, cleaner working environments critical in food production applications.

## About Southquip Industrial

Southquip Industrial is an independently owned and operated firm which has been supplying integrated conveying solutions since 1999. We manufacture components and assemble drum motors and pallet handling rollers at our Invercargill facilities. We pride ourselves on quality and continually strive to improve our products and assembly methods. Our efficient customer service and technical support ensures your conveying challenges are easily solved with Southquip.



DRIVING EFFICIENCY



# Axis Solutions



Axis AX Series  
Light Duty Drum Motors



Axis TM Series  
High Duty Drum Motors



Axis RL Series  
Pallet Conveying Drum Motors

## Axis AX Series Motorised Drums

AX72.....	10
AX84 .....	12
AX112.....	13
AX135.....	15



## Axis TM Series Motorised Drums

TM82.....	22
TM111.....	25
TM138.....	30
TM160.....	35
TM165.....	38
TM216.....	42
TM321.....	45
TM415.....	48



## Axis RL Series Motorised Pulleys

RL89 Drum Motor.....	59
RL89 TRC Drum Motor with Pinion.....	62
RL89 Gravity Roller .....	63





## Axis AX Series Motorised Drums

The Axis AX Series Drum Motors type AX72, AX84, AX112 and AX135 are specifically designed for driving light duty conveyor systems and supermarket checkouts.

They are space saving, reliable and very easy to integrate into conveyor design. A wide range of motor sizes and belt speeds ensure you get an ideal solution.

# Axis AX Series Advantages & Applications

## Advantages

1. **Low Cost:** One component replaces previously complex conveyor drives systems.
2. **Low Maintenance:** Does not require greasing or lubrication.
3. **Efficient:** Reduced drive components improves energy efficiency.
4. **Low Noise:** Enclosed drive components reduces workplace noise.
5. **Simple design:** Simple mounting with universal dimensions for fast conveyor manufacture.
6. **Flexible Design:** Standard or custom drum face widths with stainless or aluminium construction available.
7. **Local Assembly:** Assembled in New Zealand.



## Applications

- Supermarket Checkouts
- Airports and Baggage Handling
- Fruit and Vegetable Processing
- General Process Machines
- General Conveying
- Mobile Conveyors

# Axis AX72 Motorised Drum

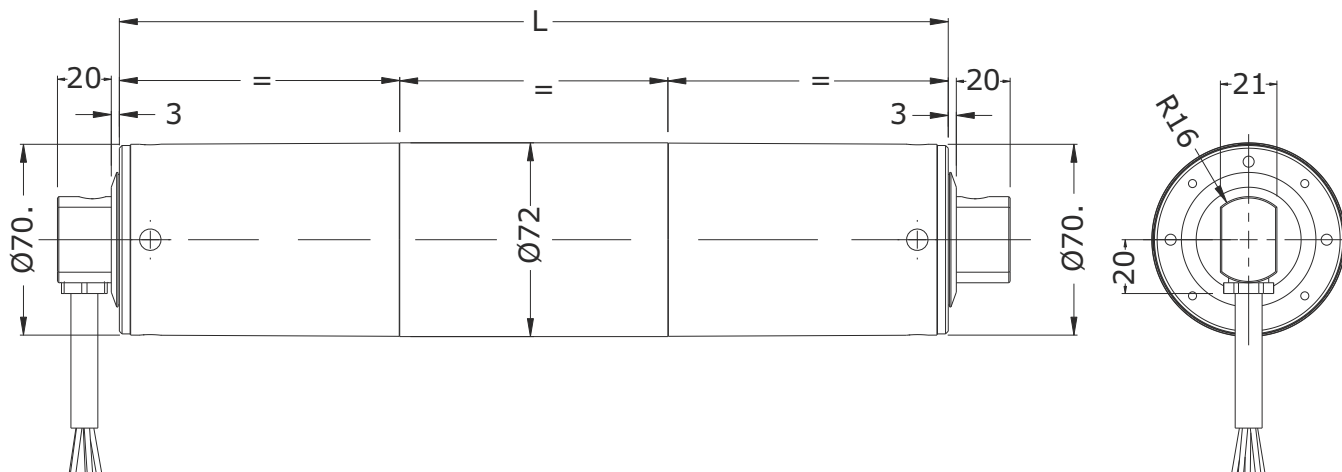
## General Features

- Diameter Ø72 mm
- Standard length from 250mm to 1000mm
- Three-phase or single-phase motors
- Input power from 60 W until 90 W
- Insulation class F
- IP66 ingress protection
- Zinc coated conical steel shell or stainless steel 304.
- Permanently lubricated with synthetic grease
- Axial or Radial cable entry
- Thermal protection
- CE and EN60034-1 Certified
- Assembled in New Zealand



# Axis AX72 Motorised Drum

## Axis AX72 Dimensions



## Axis AX72 Specifications

Type	POWER	BELT SPEED	ROTATION SPEED	BELT PULL	TORQUE	POWER INPUT (50Hz)	DRUM LENGTH	WEIGHT
		v	n2	F	T2		L min.	L=400mm
	[kW]	[m/s]	[1/min]	[N]	[Nm]	[A]	[mm]	[kg]
AX72	0,06 2-pole	0,30	80	52	2,30	3x230/400V 0,31/0,18  1x230V 0,27	250	4,8
		0,42	111	36	1,60			
		0,60	160	26	1,20			
		0,67	178	23	1,00			
		0,78	206	20	0,90			
AX72	0,09 2-pole	0,048	12	703	31,3	3x230/400V 0,45/0,26  1x230V 0,42	300	4,8
		0,067	17	510	22,7			
		0,083	22	410	18,2			
		0,10	26	343	15,2			
		0,11	29	304	13,5			
		0,13	34	269	12,0			
		0,14	37	243	10,8			
		0,16	42	215	9,50			
		0,175	46	192	8,60			
		0,20	53	170	7,60			
		0,30	79	123	5,50			
		0,42	111	85	3,80			
		0,60	159	61	2,70			
		0,67	177	55	2,40			
		0,78	206	48	2,10			

- Enquire for alternative performance data and speeds
- Indication of weight ready for operating
- Additional weight: approx. 0,4 kg for 100mm add. length

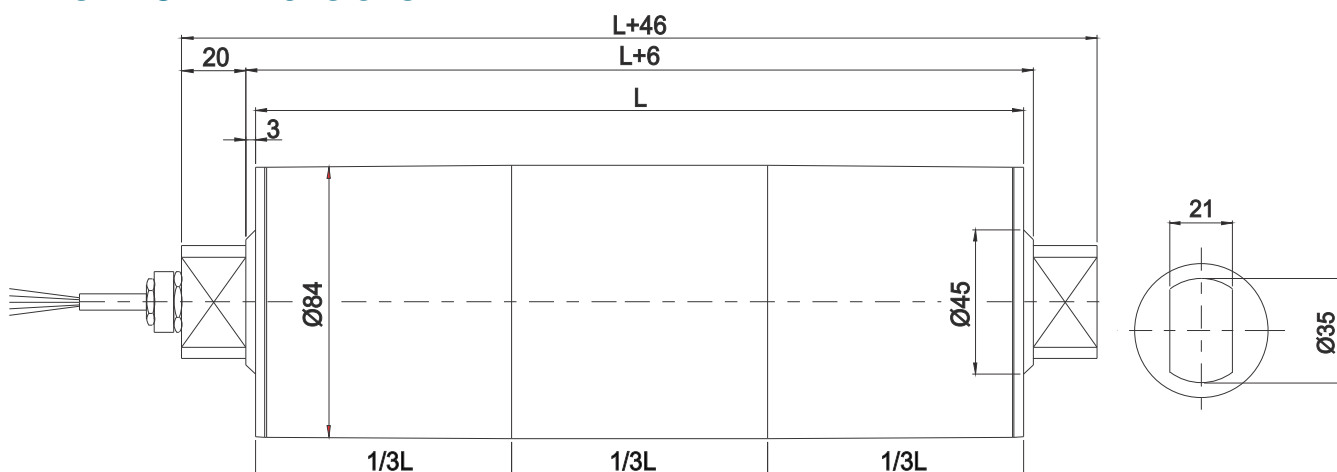
# Axis AX84 Motorised Drum

## General Features

- Diameter Ø84mm
- Standard length from 269mm to 1000mm
- Three-phase or single-phase motors
- 60 or 120 watt input power
- Insulation class F
- IP66 ingress protection
- Aluminium or stainless steel 304 construction
- Permanently lubricated with synthetic oil
- Axial or radial cable entry
- Special options available
- Assembled in New Zealand



## Axis AX84 Dimensions



## Axis AX84 Specifications

Type	POWER	BELT SPEED	ROTATION SPEED	BELT PULL	TORQUE	POWER INPUT (50Hz)	DRUM LENGTH	WEIGHT
		v	n2	F	T2		L min.	L=400mm
	[kW]	[m/s]	[1/min]	[N]	[Nm]	[A]	[mm]	[kg]
AX84	0,06 4-pole	0,08	80	750	31,9	3x230/400V 0,5/0,3 1x230V 0,50	269	4,8
		0,10	111	600	25,5			
		0,11	160	546	23,2			
AX84	0,12 4-pole	0,15	33	800	33,6	3x230/400V 0,50/0,30	300	4,8
		0,16	35	750	31,5			
		0,19	42	632	26,9			
		0,24	53	500	21,3			
		0,39	87	307	13,1			
		0,46	103	261	11,1			
		0,49	110	245	10,4			
		0,59	132	203	8,60			
		0,77	172	156	6,60			

- Enquire for alternative performance data and speeds
- Indication of weight incl oil ready for operating
- Additional weight: approx. 0,4 kg for 100mm add. length

All product details and specifications are subject to change without notice © Southquip Industrial September 2015

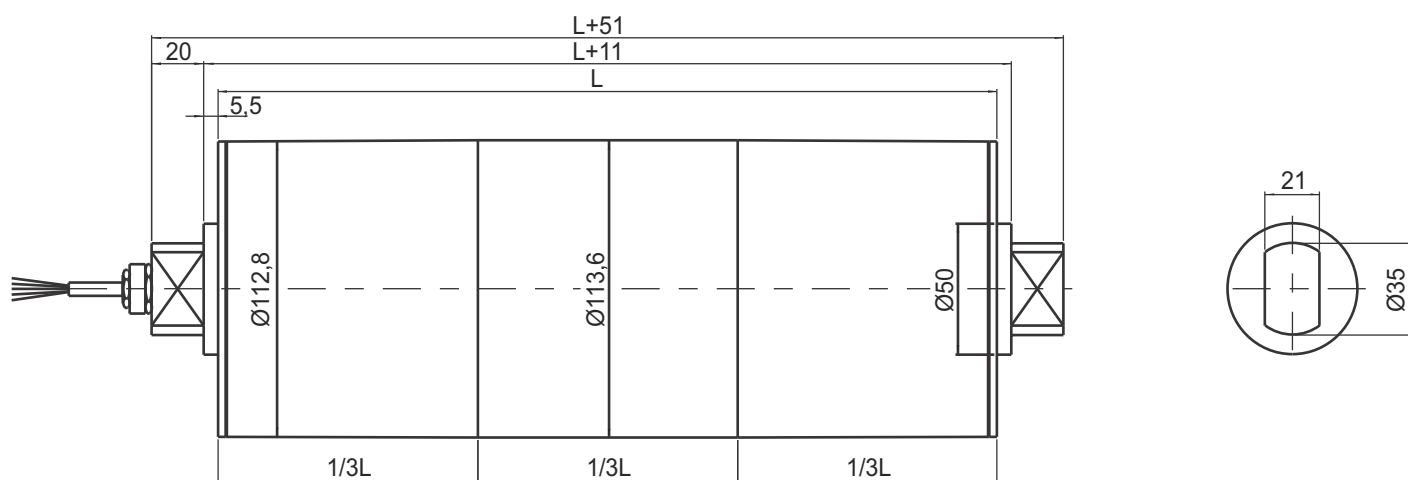
# Axis AX112 Motorised Drum

## General Features

- Diameter Ø112 mm
- Standard length from 256mm to 1100mm
- Three-phase or single-phase motors
- Input power from 60 watt to 370 watt
- Insulation F class
- IP66 Ingress protection
- Aluminum or stainless steel construction.
- Lubricated for life with synthetic oil
- Special options available
- Assembled in New Zealand



## Axis AX112 Dimensions





# Axis AX112 Motorised Drum

## Axis AX112 Specifications

Type	POWER	BELT SPEED	ROTATION SPEED	BELT PULL	TORQUE	POWER INPUT (50Hz)	DRUM LENGTH	WEIGHT
		v	n2	F	T2		L min.	L=450mm
	[kW]	[m/s]	[1/min]	[N]	[Nm]		[mm]	[kg]
AX112	0,06 4-pole	0,03	5	2222	125	3x230/400V 0,50/0,25  1x230V 0,42	256	8.4
		0,04	6	1500	85,0			
		0,06	10	1000	56,0			
		0,08	13	750	42,5			
		0,12	20	500	28,0			
		0,15	25	400	22,5			
		0,20	33	300	17,0			
		0,26	43	231	13,0			
		0,31	52	194	11,0			
		0,36	60	157	9,50			
		0,50	84	120	7,00			
AX112	0,12 4-pole	0,69	116	87	5,00	3x230/400V 0,70/0,51  1x230V 0,64	256	9.2
		0,08	13	1500	84,0			
		0,12	20	1000	56,0			
		0,15	25	800	45,0			
		0,20	33	600	34,0			
		0,26	43	462	26,0			
		0,31	52	387	22,0			
		0,36	60	333	19,0			
		0,50	84	240	13,5			
		0,69	116	174	10,0			
AX112	0,18 4-pole	0,81	136	148	8,50	3x230/400V 0,90/0,76  1x230V 2,00	276	9.4
		0,12	20	1500	84,0			
		0,15	25	1200	68,0			
		0,20	33	900	51,0			
		0,26	43	692	39,0			
		0,31	52	581	33,0			
		0,36	60	500	28,5			
		0,50	84	360	20,5			
		0,69	116	261	14,5			
		0,81	136	222	12,5			
AX112	0,25 4-pole	0,91	153	198	11,0	3x230/400V 1,20/0,98  1x230V 1,43	276	10,2
		1,05	177	171	9,50			
		0,20	33	1250	70,5			
		0,26	43	962	54,5			
		0,31	52	806	45,5			
		0,36	60	694	39,0			
		0,50	84	500	28,5			
		0,69	116	362	20,5			
		0,81	136	309	17,5			
AX112	0,37 4-pole	0,91	153	275	15,5	3x230/400V 1,20/0,98  1x230V 1,80	276	10,6
		1,05	177	238	13,5			
		0,20	33	1250	70,5			
		0,26	43	962	54,5			
		0,31	52	806	45,5			
		0,36	60	694	39,0			
		0,50	84	500	28,5			
		0,69	116	362	20,5			
		0,81	136	309	17,5			

- Enquire for alternative performance data and speeds
- Indication of weight incl oil ready for operating, varies depending on construction.
- Additional weight: approx. 0,5 kg for 100mm add. length

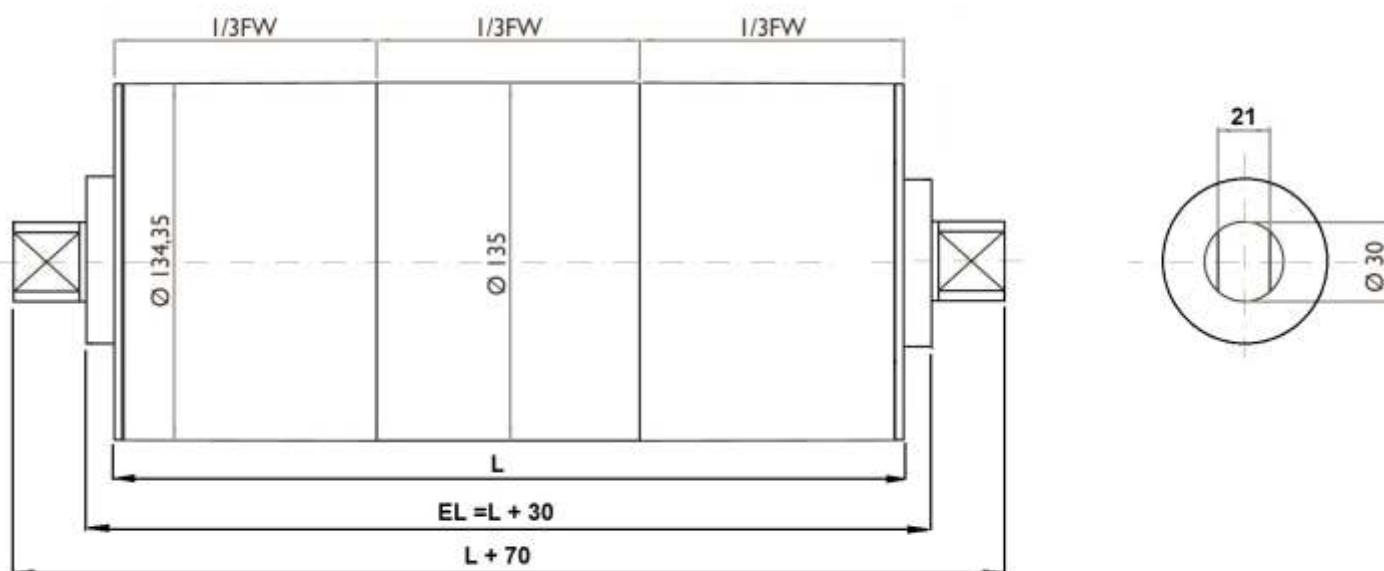
# Axis AX135 Motorised Drum

## General Features

- Diameter Ø135mm
- Standard length from 300mm until 1100mm
- Three-phase or single-phase motors
- Input power from 120W to 550W
- Insulation F class
- IP66 ingress protection
- Aluminium or stainless steel construction
- Permanently lubricated with synthetic oil
- Special options available
- Assembled in New Zealand



## Axis AX135 Dimensions





# Axis AX135 Motorised Drum

## Axis AX135 Specifications

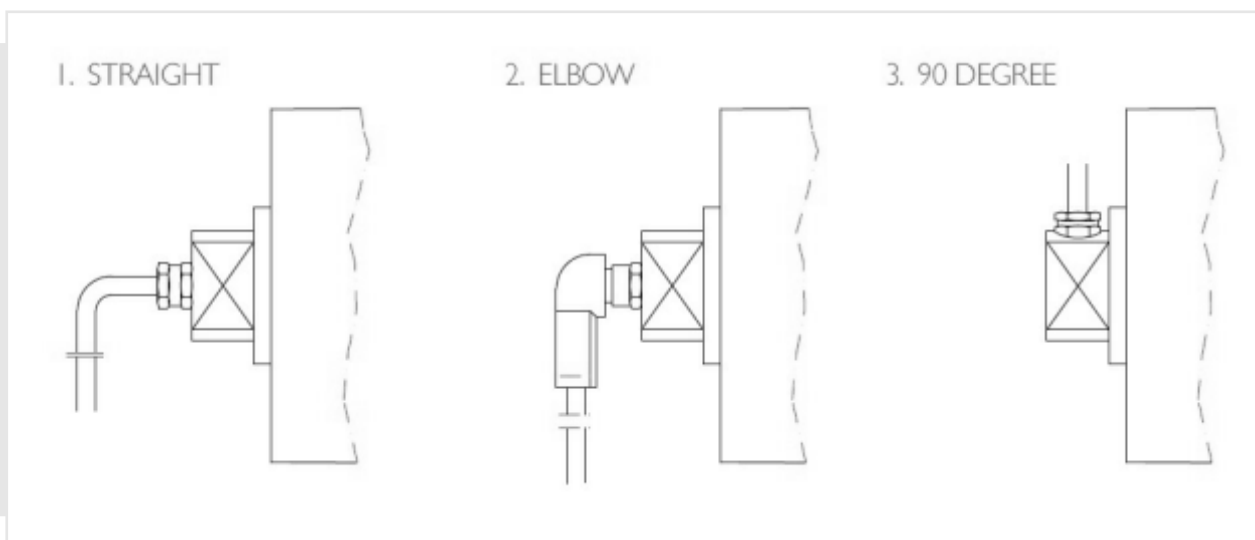
Type	POWER	BELT SPEED	ROTATION SPEED	BELT PULL	TORQUE	POWER INPUT (50Hz)	DRUM LENGTH	WEIGHT
		v	n2	F	T2		L min.	L=600mm
	[kW]	[m/s]	[1/min]	[N]	[Nm]	[A]	[mm]	[kg]
AX135	0,12 4-pole	0,10	14	1200	81,0	3x230/400V 0,95/0,70 1x230V 0,92	350	11.5
		0,14	19	857	58,0			
		0,18	25	657	45,0			
AX135	0,18 4-pole	0,18	25	1000	67,5	3x230/400V 1,20/0,94 1x230V 2,30	350	11.7
		0,24	33	750	50,5			
		0,31	43	581	39,0			
AX135	0,25 4-pole	0,18	25	1389	94,0	3x230/400V 1,50/1,17  1x230V 1,70	350	12,1
		0,24	33	1042	70,0			
		0,31	43	806	54,5			
		0,36	50	694	47,0			
		0,41	57	610	41,0			
AX135	0,37 4-pole	0,24	33	1542	104	3x230/400V 1,90/1,24  1x230V 2,30	350	12,3
		0,31	43	1134	80,5			
		0,36	50	902	61,0			
		0,41	57	694	47,0			
		0,50	70	617	42,0			
		0,80	113	463	31,0			
		0,93	131	398	27,0			
		1,07	151	345	23,5			
AX135	0,55 4-pole	1,25	176	295	20,0	3x230/400V 2,80/1,80	350	12.6
		0,31	43	1774	120			
		0,41	57	1341	90,5			
		0,60	70	917	62,0			
		0,80	113	688	46,5			
		0,93	131	591	40,0			
		1,07	151	514	34,5			

- Enquire for alternative performance data and speeds
- Indication of weight incl oil ready for operating, varies depending on construction.
- Additional weight: approx. 0,6 kg for 100mm add. length

All product details and specifications are subject to change without notice © Southquip Industrial September 2015

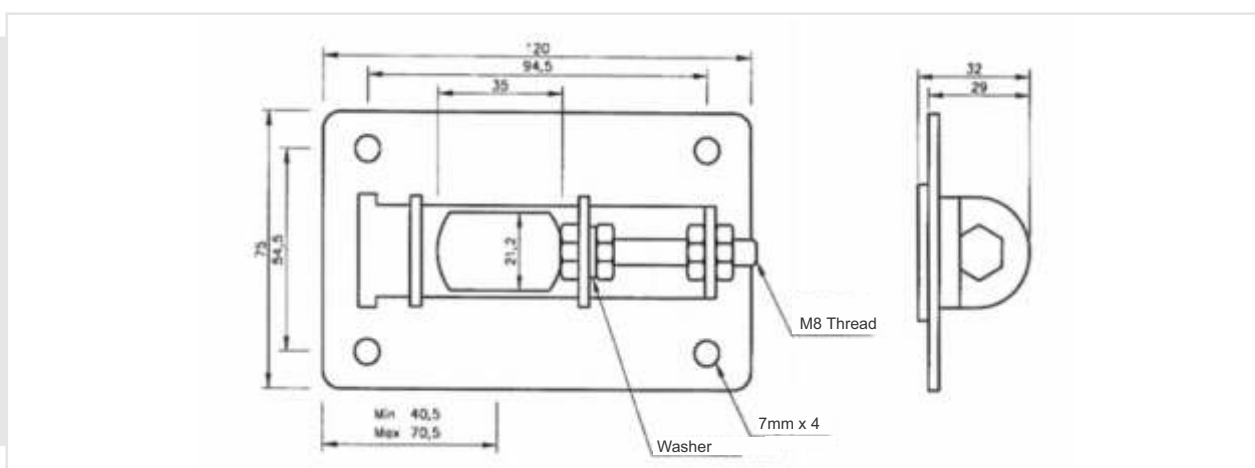


# Axis AX Series Output Cable Options

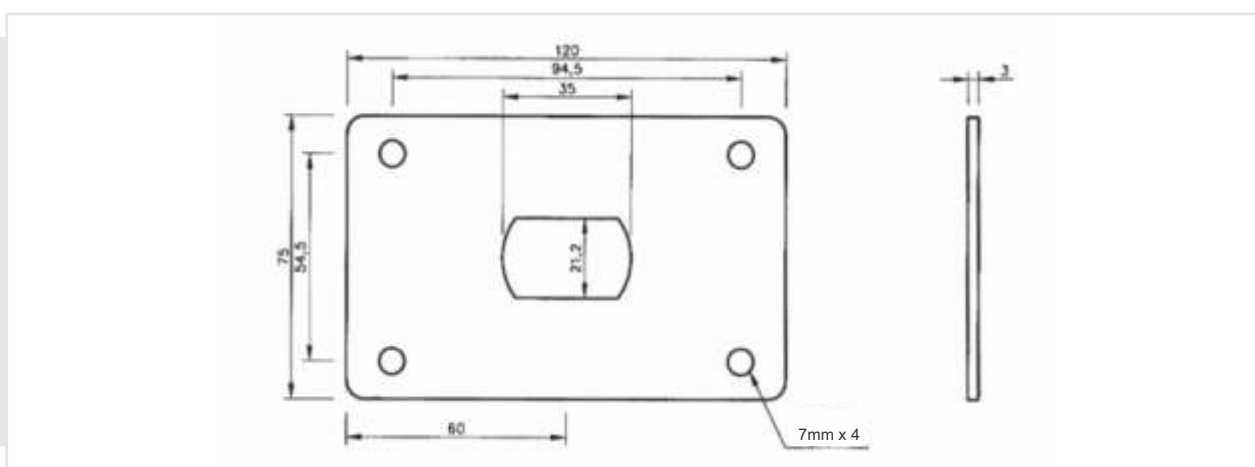


## Axis AX Series Accessories

Sliding Bracket (Adjustable belt tension)



### Fixed Bracket



# Axis Caculas Method

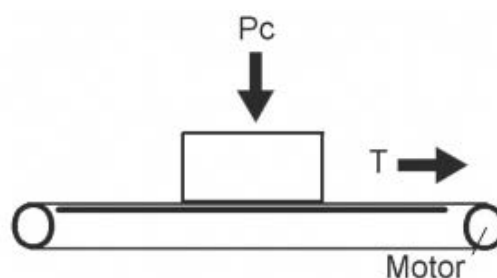
In the following charts we show you calculi formulae used to find out the correct tension to motorise conveyor systems with AX Series Drum Motors..

To choose the appropriate motorised drum, the tension (or tangential power) obtained must be inferior or equal than as indicated in the technical tables.

## Calculation for Slider Bed Conveyor

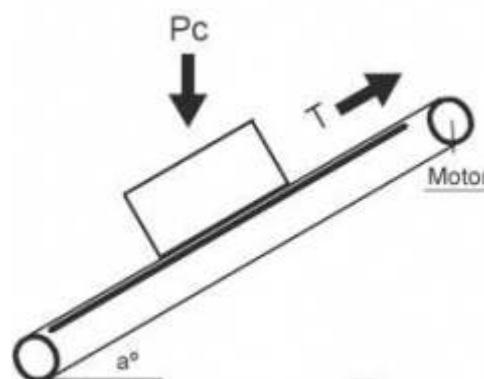
### Horizontal slider bed conveyor

$$T = P_c * 9.81 * 1.1 * C_n$$



### Inclined slider bed conveyor

$$T = P_c * 9.81 * (C_n * \cos a + \sin a)$$

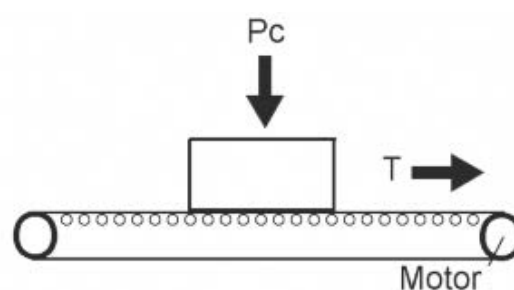


a°	5°	10°	20°	30°	40°	50°
<b>Cos a</b>	0.99619	0.98481	0.93969	0.86603	0.76604	0.64279
<b>Sen a</b>	0.08716	0.17365	0.34202	0.50000	0.64279	0.76604

# Axis Caculas Method

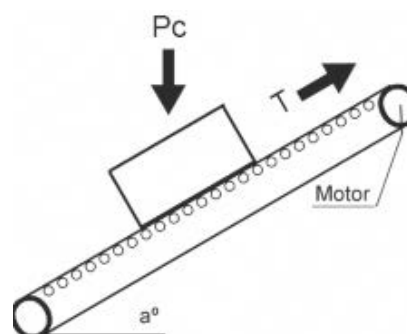
## Calculation for Roller Bed Conveyor

### Horizontal roller bed conveyor



$$T = ( P_n + P_c ) * 9.81 * 0.06$$

### Inclined roller bed conveyor



$$T = ( P_n + P_c ) * 9.81 * ( 0.06 * \cos a + \sin a )$$

**T** = Tension – Tangential power ( N ). **P<sub>n</sub>** = Total belt weight ( Kg ).  
**P<sub>c</sub>** = Total load weight ( Kg ).  
**C<sub>n</sub>** = Friction coefficient between belt and slider bed.  
**a** = Conveyor inclination angle.



## Axis TM Series Motorised Drums

The Axis TM Series conveyor drum motors serve to drive stationary or mobile belt conveyors for the transport of bulk goods of many kinds. They can also be used in transport systems without belts. The Axis TM Series conveyor drum motor, as a result of its compact construction and good adaptability has gained more and more functional ranges in driving technology.

The TM range covers drum diameters from 82mm to 415mm allowing the Axis conveyor drum motor to be successfully used in a vast range of handling applications.

# Axis TM Advantages & Applications

## Advantages

1. **Low Maintenance:** Enclosed drive system protected from outside influence.
2. **Efficient:** Precision ground gears and reduced drive components minimises energy loss.
3. **Low Noise:** Helical gear with steel toothing for quiet operation.
4. **Simple Design:** Flat shafts make installation simple when used with standard two part clamping bearings.
5. **Flexible Dimensions:** Standard or custom shell lengths and shaft dimensions available.
6. **Flexible Design:** Wide options in electrical and mechanical specifications as well as drum shell coatings ensures optimum performance in your application.

## Applications

- Airport Security
- Baggage Handling
- Fruit and Vegetable Processing
- General Food Production
- Seafood Production
- Recycling
- Bulk Handling
- Mobile Conveyors



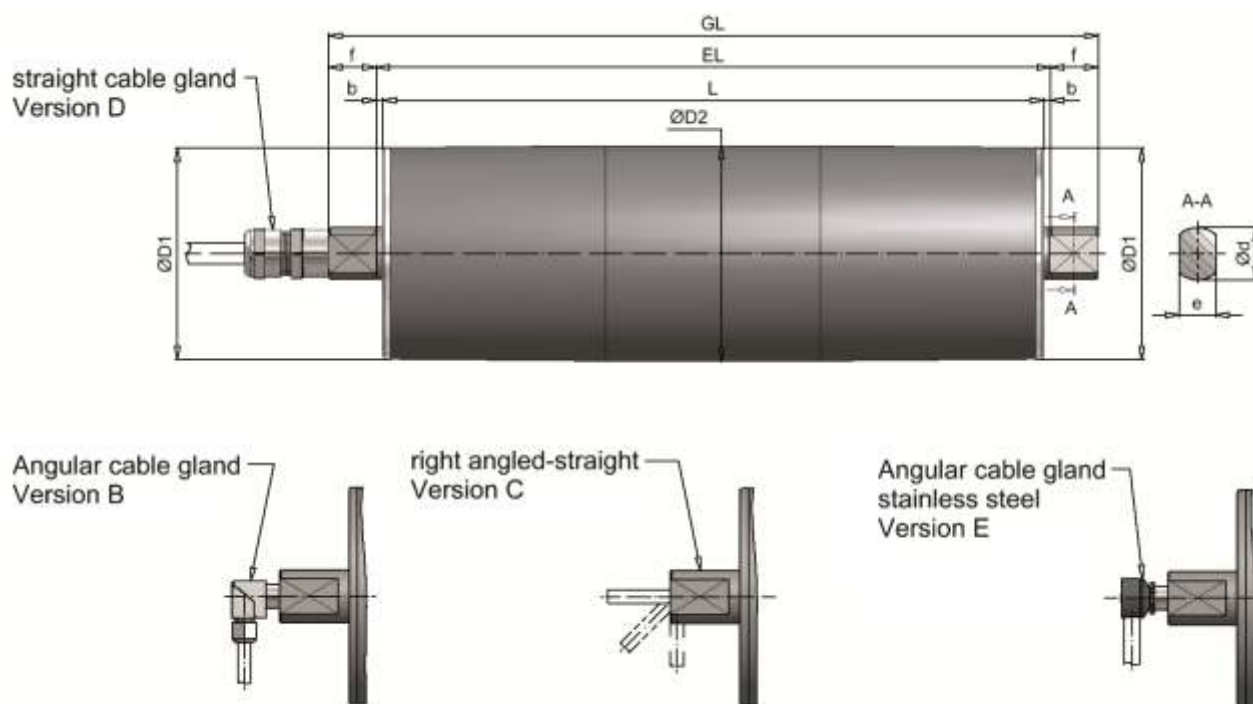
# Axis TM82 Motorised Drum

## General Features

- Diameter Ø82mm
- High duty helical gear unit with steel toothing
- Standard length from 200mm to 800mm
- Three-phase or single-phase motors
- 18 Watt to 120 Watt input power
- Insulation Class F
- IP66 Protection
- Mild steel/alloy or stainless steel construction
- Lubricated with synthetic oil
- Special options available
- Quality European gear system



## Axis TM82 Dimensions



dimensions in mm

DRUM MOTOR									STANDARD IP66		
Size	Type	Ø D1**	Ø D2**	a	Ø N	Ø d	e	f	f1	b	EL
82	TM 82.1	80	81,5			20	14	18		2,5	L + 5
GUIDE DRUM											
82	UT 82.1	80	81,5			20	14	18		2,5	L + 5

\* With 1m cable

\*\* Diameter with cylindrical drum design Ø81mm

# Axis TM82 Motorised Drum

## TM82 Performance Data

Type	POWER	BELT SPEED	ROTATION SPEED	BELT PULL	TORQUE	POWER INPUT AT 400V / 50Hz	DRUM LENGTH	WEIGHT
		v	n2	F	T2		L min.	L=400mm
	[kW]	[m/s]	[1/min]	[N]	[Nm]		[mm]	[kg]
TM82.1	0,018 8-pole	0,03	8	537	22	0,18	250	4,5
		0,05	11	375	15			
		0,06	14	305	12			
		0,09	20	209	9			
		0,12	29	146	6			
		0,15	36	119	5			
TM82.1	0,04 4-pole	0,08	19	482	20	0,23	200	3,5
		0,10	22	419	17			
		0,14	32	292	12			
		0,17	39	238	10			
		0,25	58	163	7			
		0,35	83	114	5			
TM82.1	0,07 2-pole	0,43	101	93	4			
		0,18	43	384	16	0,20	200	3,5
		0,21	49	334	14			
		0,30	70	233	9			
		0,37	87	190	8			
		0,54	126	130	5			
TM82.1	0,07 4-pole	0,77	181	91	4			
		0,95	222	74	3			
		0,08	20	827	34	0,37	250	4,5
		0,10	23	718	29			
		0,14	33	501	20			
		0,17	40	408	17			
TM82.1	0,12 2-pole	0,25	59	279	11			
		0,36	84	195	8			
		0,44	103	159	6			
		0,19	43	647	26	0,31	250	4,5
		0,21	50	562	23			
		0,31	72	392	16			
TM82.1	0,12 2-pole	0,38	88	319	13			
		0,55	129	218	9			
		0,79	185	152	6			
		0,97	227	124	5			

- Alternative performance data and speeds on request
- Indication of weight incl. oil filling (ready for operating)
- Additional weight: approx. 0,8 kg for 100mm add. length

# Axis TM82 Design & Options

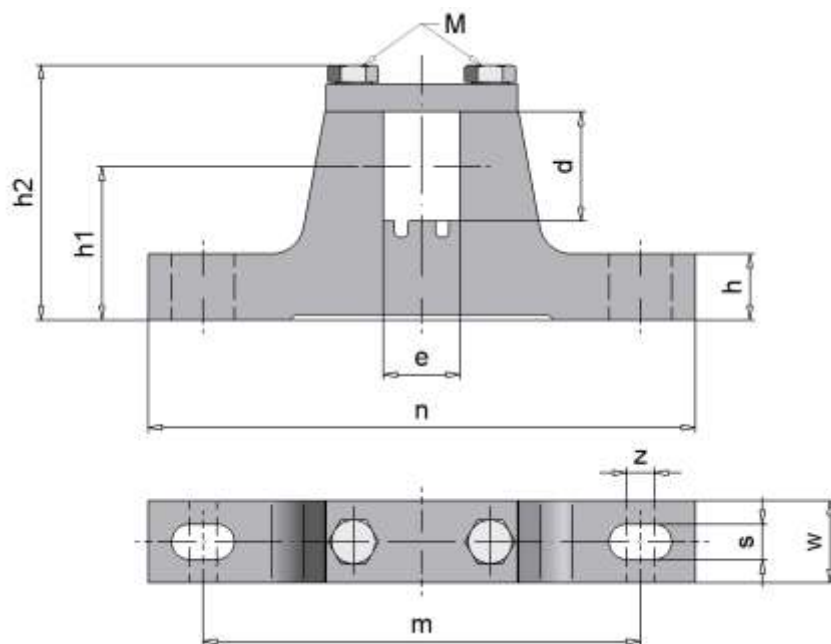
## Standard Configuration

- Crowned shell, mild steel with rust protection paint
- Bearing covers made of aluminium
- Shafts made of mild steel with rust protection paint
- Helical gear unit with steel toothing (quiet)
- IP66 protection rating
- Straight cable gland with 1m cable

## Options

- Internal brake
- Terminal box connection
- Angular cable gland (with 1m cable)
- Angular cable gland stainless steel (with 1m cable)
- Right angled-straight cable gland (with 1m cable)
- Mechanical backstop
- Sprocket / toothed belt disc
- Sensor bearing unit (rotary encoder)
- Cylindrical drum shell, coated, zinc plated
- Stainless steel design
- Thermal overload protection
- IP67 protection
- Suitable for frequency converter use
- For modular plastic conveyor belts and grooved rubber lagging
- Vertical mounting (should be stated in the order)
- Food-safe lubricant
- Drum motor as cartridge
- Single-phase motors on request
- Alternative custom designs also available - please enquire.

## TM82 Clamping Bearing



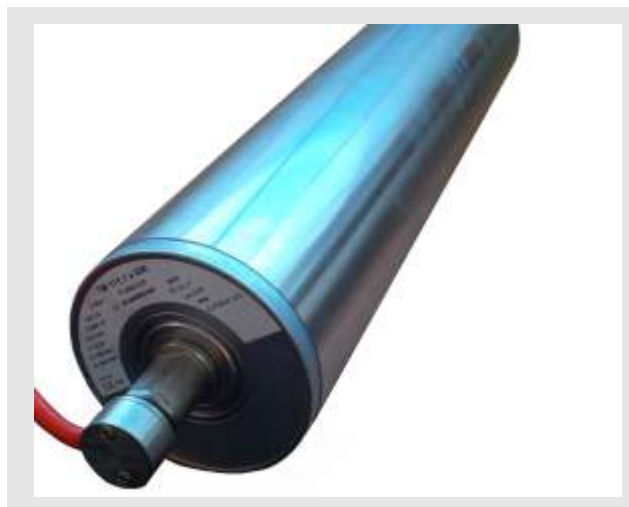
Dimensions in mm

DRUM TYPE	CLAMPING BEARING	d	e	h	h1	h2	m	n	s	w	z	M	MATERIAL	ca. kg
TM82	EL20/14	20	14	12	28	47	80	100	6,5	15	5	M5	Steel	0,25

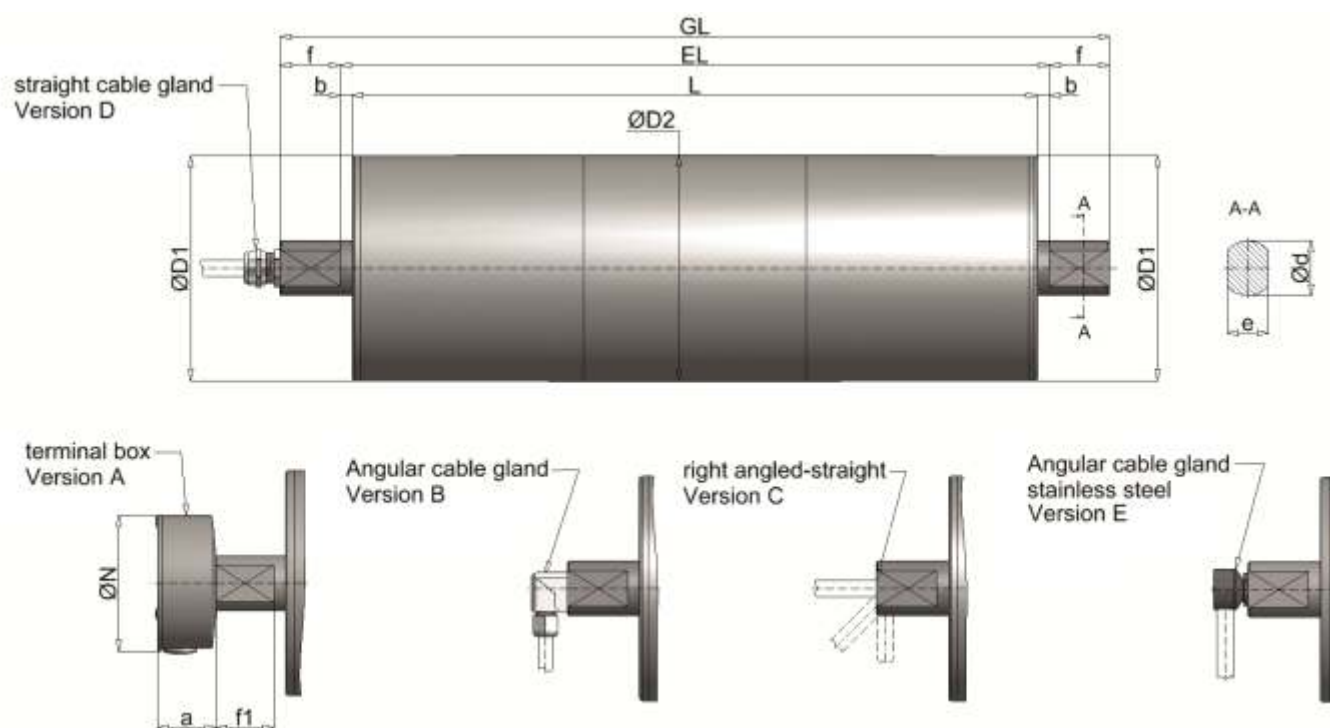
# Axis TM111 Motorised Drum

## General Features

- Diameter Ø111mm
- High duty helical gear unit with steel toothing
- Standard length from 260mm to 800mm
- Three-phase or single-phase motors
- 75 Watt to 550 Watt input power
- Insulation class F
- IP66 protection
- Mild steel or stainless steel construction
- Permanently lubricated with synthetic oil
- Axial, radial gland or terminal box connection
- Special options available



## Axis TM111 Dimensions



dimensions in mm

DRUM MOTOR										STANDARD IP66	
Size	Type	Ø D1	Ø D2**	a	Ø N	Ø d	e	f	f1	b	EL
111	TM 111.1	112,5	113,5	43	100	25	20	25	23	5	L + 10
	TM 111.0					30	25	24	22	8,5	L + 17
GUIDE DRUM											
111	UT 111.1	112,5	113,5			25	20	25		5	L + 10
	UT 111.0					30	25	24		8,5	L + 17

\* With 1m cable

\*\* Diameter with cylindrical drum design 113



# AxisTM111 Design & Options

## TM111 Performance Data

Type	POWER	BELT SPEED	ROTATION SPEED	BELT PULL	TORQUE	POWER INPUT AT 400V / 50Hz	DRUM LENGTH	WEIGHT
		v	n2	F	T2		L min.	L=400mm
	[kW]	[m/s]	[1/min]	[N]	[Nm]		[mm]	[kg]
TM111	0,075 8-pole	0,09	16	795	45	0,45	260	12,5
		0,12	19	650	37			
		0,14	23	541	31			
		0,16	28	456	26			
		0,19	33	388	22			
		0,23	38	333	19			
		0,26	44	286	16			
		0,28	47	271	15			
		0,34	57	221	13			
		0,41	68	184	10			
		0,48	81	155	9			
		0,57	95	132	8			
		0,66	111	113	6			
		0,77	129	98	6			
TM111	0,12 6-pole	0,14	23	876	50	0,57	260	12,5
		0,17	28	716	41			
		0,20	34	596	34			
		0,24	40	503	29			
		0,28	47	428	24			
		0,33	55	367	21			
		0,38	64	316	18			
		0,40	68	299	17			
		0,49	83	244	14			
		0,59	99	203	12			
		0,70	118	171	10			
		0,82	138	146	8			
		0,96	162	125	7			
		1,11	188	108	6			
TM111	0,18 4-pole	0,21	36	845	48	0,68	260	12,5
		0,26	44	690	39			
		0,31	53	575	33			
		0,37	63	485	27			
		0,44	73	413	23			
		0,51	86	354	20			
		0,59	99	304	17			
		0,63	105	288	16			
		0,76	129	235	13			
		0,92	155	196	11			
		1,09	183	165	9			
		1,28	215	141	8			
		1,49	251	121	7			
		1,73	292	104	6			

# AxisTM111 Motorised Drum

## TM111 Performance Data

Type	POWER	BELT SPEED	ROTATION SPEED	BELT PULL	TORQUE	POWER INPUT AT 400V / 50Hz	DRUM LENGTH	WEIGHT
		v	n2	F	T2		L min.	L=400mm
	[kW]	[m/s]	[1/min]	[N]	[Nm]		[mm]	[kg]
TM111	0,25 4-pole	0,21	36	1173	67	0,94	260	12,5
		0,26	44	959	54			
		0,31	53	798	45			
		0,37	63	673	38			
		0,44	73	573	33			
		0,51	86	491	28			
		0,59	99	423	24			
		0,63	105	400	23			
		0,76	129	327	19			
		0,92	155	272	15			
		1,09	183	229	13			
		1,28	215	195	11			
		1,49	251	167	10			
		1,73	292	144	8			
TM111	0,30 4-pole	0,21	36	1408	80	1,10	280	13,6
		0,26	44	1151	65			
		0,31	53	958	54			
		0,37	63	808	46			
		0,44	73	688	39			
		0,51	86	589	33			
		0,59	99	507	29			
		0,63	105	480	27			
		0,76	129	392	22			
		0,92	155	326	19			
		1,09	183	275	16			
		1,28	215	234	13			
		1,49	251	201	11			
		1,73	292	173	10			
TM111	0,37 2-pole	0,43	72	868	49	0,95	260	12,5
		0,52	88	710	40			
		0,63	105	591	34			
		0,74	125	498	28			
		0,87	147	424	24			
		1,02	171	363	21			
		1,18	199	313	18			
		1,25	210	296	17			
		1,53	257	242	14			
		1,84	309	201	11			
		2,18	367	170	10			
		2,56	431	145	8			
		2,99	503	124	7			
		3,47	584	107	6			

# AxisTM111 Design & Options

## TM111 Performance Data

TM111	0,55 2-pole	0,42	71	1300	74	1,26	280	13,6
		0,52	87	1062	60			
		0,62	105	884	50			
		0,74	124	746	42			
		0,87	146	635	36			
		1,01	170	544	31			
		1,17	198	469	27			
		1,24	209	443	25			
		1,52	256	362	21			
		1,82	307	301	17			
		2,16	364	254	14			
		2,54	428	216	12			
		2,97	499	185	11			
		3,44	579	160	9			

alternative performance data and speeds on request  
 indication of weight incl. oil filling (ready for operating)  
 additional weight: approx. 1kg for 100mm add. length  
 with brake mounting L min. dimension raises up 65mm

## Standard Configuration

- Crowned shell, mild steel with rust protection paint
- Bearing covers made of aluminium
- Shafts made of mild steel with rust protection paint
- Helical gear unit with steel toothing (quiet)
- Straight cable gland with 1m cable

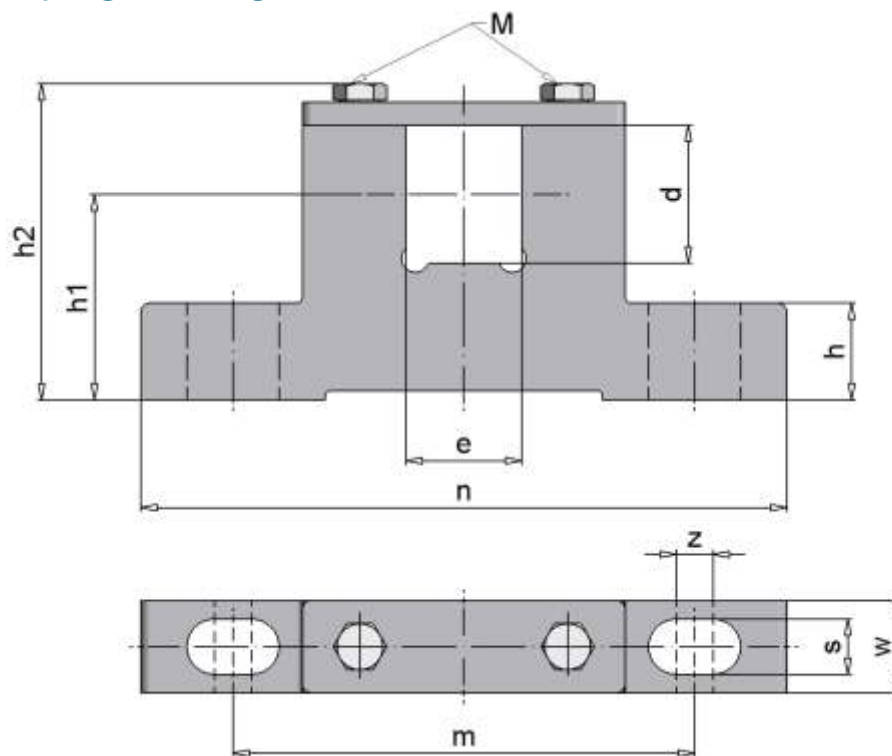
## Options

- Internal brake
- Terminal box connection
- Angular cable gland (with 1m cable)
- Angular cable gland stainless steel (with 1m cable)
- Right angled-straight cable gland (with 1m cable)
- Mechanical backstop
- Sprocket / toothed belt disc
- Sensor bearing unit (rotary encoder)
- Cylindrical drum shell, coated, zinc plated
- Stainless steel design
- Thermal overload protection
- IP67 protection
- Suitable for frequency converter use
- For modular plastic conveyor belts and grooved rubber lagging
- Vertical mounting (should be stated in the order)
- Food-safe lubricant
- Drum motor as cartridge
- Single phase motors on request

Alternative custom designs also available  
 please enquire.

# AxisTM111 Motorised Drum

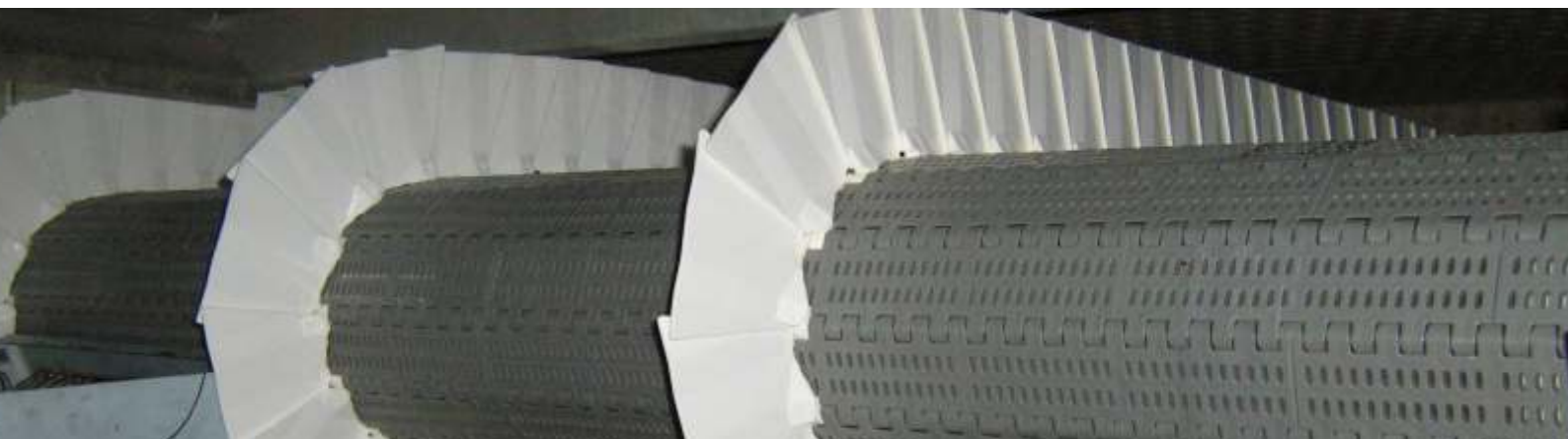
## TM111 Clamping Bearing



dimensions in mm

DRUM TYPE	CLAMPING BEARING	d	e	h	h <sub>1</sub>	h <sub>2</sub>	m	n	s	w	z	M	MATERIAL	Kg
TM111.1	EL25/20	25	20	21	44,5	66	100	140	12	20	8	M6	Steel	0,7
TM111.0	EL30/25	30	25	21	44,5	68,5	100	140	12	20	8	M6		0,7

All product details and specifications are subject to change without notice © Southquip Industrial September 2015



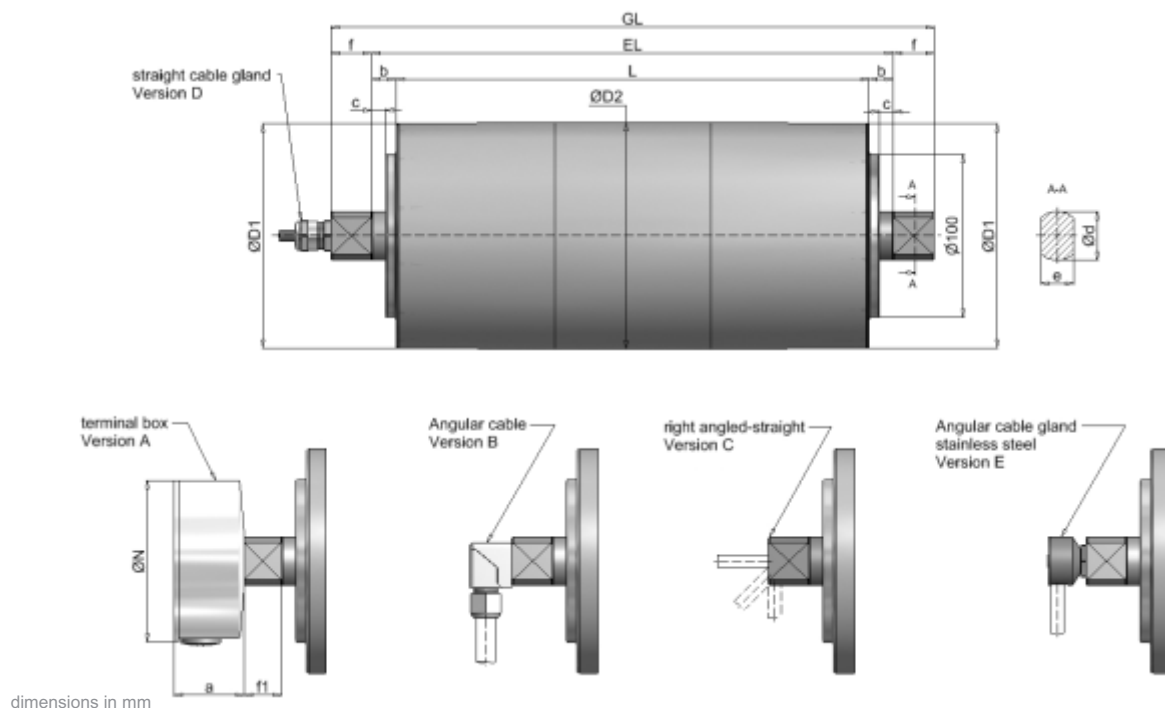
# AxisTM138 Motorised Drum

## General Features

- Diameter Ø138mm
- High duty helical gear unit with steel toothing
- Standard length from 300mm to 1350mm
- Three-phase motor or single-phase on request
- 90 Watt to 1000 Watt input power
- Insulation class F
- Mild or stainless steel construction
- Lubricated with synthetic oil
- Straight or angular cable gland or terminal box connection
- Special options available
- Quality European manufacture



## TM138 Dimensions



DRUM MOTOR											STANDARD IP66	
size	Typ	Ø D1	Ø D2**	a	Ø N	c	Ø d	e	f	f1	b	EL
138.1	TM 138.1	137	138,5	43	100	2,5	30	25	24	22	8,5	L + 17
138.0	TM 138.0	137	138,5	43	100	2,5	30	20	24	22	3	L + 6
GUIDE DRUM												
138.1	UT 138.1	137	138,5			2,5	30	25	24		8,5	L + 17
138.0	UT 138.1	137	138,5			2,5	30	20	24		3	L + 6

\* with 1m cable

\*\* diameter with cylindrical drum design 137mm

# AxisTM138 Motorised Drum

## TM138 Performance Data

Type	POWER	BELT SPEED	ROTATION SPEED	BELT PULL	TORQUE	POWER INPUT AT 400V / 50Hz	DRUM LENGTH	WEIGHT
		v	n2	F	T2		L min.	L=400mm
	[kW]	[m/s]	[1/min]	[N]	[Nm]	[A]	[mm]	[kg]
TM138	0,09 12-pole	0,04	6	2218	153	0,82	300	15
		0,05	7	1797	124			
		0,06	8	1478	102			
		0,07	9	1362	94			
		0,08	10	1198	83			
		0,11	15	826	57			
		0,08	11	1093	75			
		0,1	14	908	63			
		0,12	17	728	50			
		0,16	23	550	38			
		0,15	21	591	41			
		0,19	26	479	33			
		0,25	34	363	25			
		0,31	43	291	20			
		0,41	57	220	15			
TM138	0,18 8-pole	0,07	9	2739	189	0,80	300	15
		0,08	11	2219	153			
		0,1	14	1826	126			
		0,11	15	1683	116			
		0,12	17	1480	102			
		0,13	18	1350	93			
		0,16	22	1122	77			
		0,18	24	1020	70			
		0,2	28	900	62			
		0,25	34	731	50			
		0,26	37	680	47			
		0,3	42	592	41			
		0,4	56	449	31			
		0,5	69	360	25			
		0,66	92	272	19			
TM138	0,25 6-pole	0,09	12	2782	192	0,85	300	15
		0,11	15	2254	156			
		0,13	19	1855	128			
		0,15	20	1709	118			
		0,17	23	1503	104			
		0,18	25	1371	95			
		0,22	30	1139	79			
		0,24	33	1036	71			
		0,27	38	914	63			
		0,34	47	742	51			
		0,36	50	691	48			
		0,42	58	601	41			
		0,55	76	456	31			
		0,68	95	366	25			
		0,91	125	276	19			



# AxisTM138 Motorised Drum

## TM138 Performance Data

Type	POWER	BELT SPEED	ROTATION SPEED	BELT PULL	TORQUE	POWER INPUT AT 400V / 50Hz	DRUM LENGTH	WEIGHT
		v	n2	F	T2		L min.	L=400mm
	[kW]	[m/s]	[1/min]	[N]	[Nm]	[A]	[mm]	[kg]
TM138	0,25 4-pole	0,14	19	1848	128	0,80	300	15
		0,17	23	1497	103			
		0,2	28	1232	85			
		0,22	30	1135	78			
		0,25	35	998	69			
		0,27	38	911	63			
		0,33	46	757	52			
		0,35	50	688	47			
		0,41	57	607	42			
		0,51	70	493	34			
		0,55	75	459	32			
		0,63	87	399	28			
		0,83	114	303	21			
		1,03	143	243	17			
		1,36	189	183	13			
TM138	0,37 4-pole	0,14	19	2735	189	1,10	300	15
		0,17	23	2216	153			
		0,2	28	1823	126			
		0,22	30	1680	116			
		0,25	35	1477	102			
		0,27	38	1348	93			
		0,33	46	1120	77			
		0,36	50	1018	70			
		0,41	57	898	62			
		0,51	70	729	50			
		0,55	75	679	47			
		0,63	87	591	41			
		0,83	114	448	31			
		1,03	143	359	25			
		1,36	189	271	19			
TM138	0,55 4-pole	0,2	28	2740	189	1,60	300	15
		0,22	30	2525	174			
		0,25	34	2220	153			
		0,27	38	2025	140			
		0,33	45	1683	116			
		0,36	50	1530	106			
		0,41	56	1350	93			
		0,5	69	1096	76			
		0,54	75	1020	70			
		0,62	86	888	61			
		0,82	113	673	46			
		1,02	141	540	37			
		1,35	187	408	28			

# AxisTM138 Motorised Drum

## TM138 Performance Data

Type	POWER	BELT SPEED	ROTATION SPEED	BELT PULL	TORQUE	POWER INPUT AT 400V / 50Hz	DRUM LENGTH	WEIGHT
		v	n2	F	T2		L min.	L=400mm
	[kW]	[m/s]	[1/min]	[N]	[Nm]		[mm]	[kg]
TM138	0,75 4-pole	0,32	44	2338	161	2,20	300	15
		0,35	49	2125	147			
		0,4	55	1875	129			
		0,49	68	1522	105			
		0,53	73	1417	98			
		0,61	84	1233	85			
		0,8	111	935	65			
		1	138	750	52			
	1,32	183	566	39				
TM138	0,75 2-pole	0,27	37	2802	193	1,90	300	15
		0,33	46	2270	157			
		0,4	56	1868	129			
		0,44	60	1721	119			
		0,5	69	1513	104			
		0,54	75	1381	95			
		0,65	90	1148	79			
		0,72	99	1043	72			
		0,81	113	920	64			
		1	139	747	52			
		1,08	149	696	48			
		1,24	171	605	42			
		1,63	226	459	32			
		2,04	282	368	25			
	2,7	373	278	19				
TM138	0,90 2-pole	0,33	46	2695	186	1,95	300	15
		0,41	56	2218	153			
		0,44	61	2044	141			
		0,5	69	1797	124			
		0,55	76	1639	113			
		0,66	91	1362	94			
		0,73	101	1239	85			
		0,82	114	1093	75			
		1,01	140	887	61			
		1,09	151	826	57			
		1,25	173	719	50			
		1,65	229	545	38			
		2,06	285	437	30			
			2,73	377	330			
TM138	1,00 4-pole	0,32	45	2795	193	2,6	360	15
		0,35	49	2541	175			
		0,4	56	2241	155			
		0,49	68	1820	126			
		0,53	74	1694	117			
		0,61	85	1474	102			
		0,81	111	1118	77			
		1	139	897	62			
	1,33	184	677	47				

- alternative performance data and speeds on request
- indication of weight incl. oil filling (ready for operating)
- additional weight: approx. 2kg for 100mm add. length
- with brake mounting L min. dimension raises up 100mm

# AxisTM138 Design & Options

## Standard Configuration

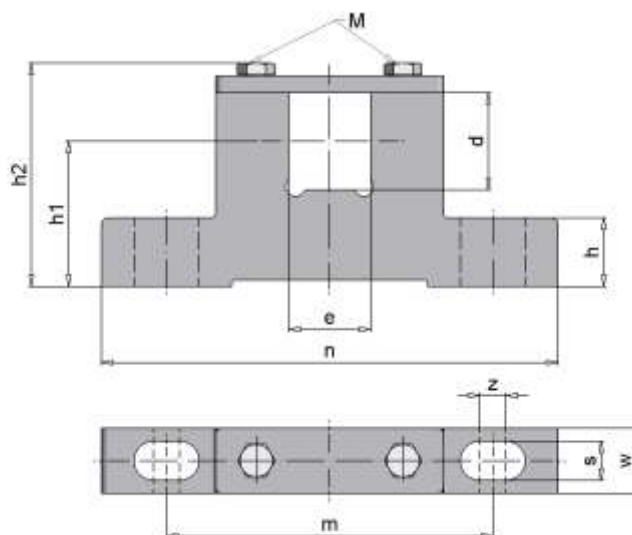
- Crowned shell, mild steel with rust protection paint
- Bearing covers made of aluminium
- Shafts made of mild steel with rust protection paint
- Helical gear unit with steel toothing (quiet)
- IP66 Protection rating
- Straight cable gland with 1m cable

## Options

- Internal brake
- Terminal box connection
- Angular cable gland (with 1m cable)
- Angular cable gland stainless steel (with 1m cable)
- Right angled-straight cable gland (with 1m cable)
- Mechanical backstop
- Sprocket / toothed belt disc
- Sensor bearing unit (rotary encoder)
- Cylindrical drum shell, coated, zinc plated
- Stainless steel design
- Thermal overload protection
- IP67 Protection
- Suitable for frequency converter use
- For modular plastic conveyor belts and grooved rubber lagging
- Terminal box design in stainless steel
- Vertical mounting (should be stated in the order)
- Food-safe lubricant
- Single-phase motors on request

Alternative custom designs also available - please enquire.

## TM138 Clamping Bearing



dimensions in mm

DRUM TYPE	CLAMPING BEARING	d	e	h	h1	h2	m	n	s	w	z	M	Material	KG
TM138.1	EL30/20	30	20	21	44,5	68,5	100	140	12	24	8	M6	Steel	0,7

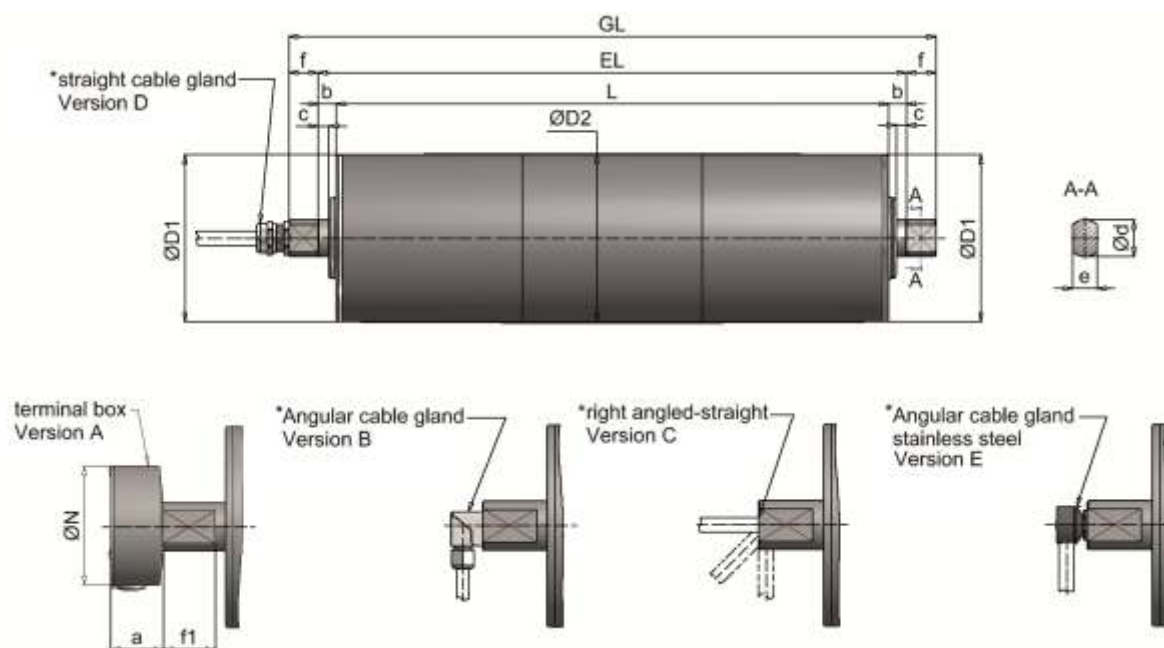
# Axis160 Motorised Drum

## General Features

- Diameter Ø160mm
- High duty helical gear unit with steel toothing
- Standard length from 320mm to 1350mm
- Three-phase motor or single-phase on request
- 90 Watt to 750 Watt input power
- Insulation class F
- Mild steel or stainless steel construction
- Lubricated with synthetic oil
- Straight, angular cable gland or terminal box connection
- Special options available



## TM160 Dimensions



DRUM MOTOR											STANDARD IP65		OPTIONAL IP66	
Size	Type	ØD1*	ØD2**	a	ØN	c	Ød	e	f	f1	b	EL	b	EL
160	TM 160.0	160	161,5	43	100	2,5	40	30	44	44	8,5	L + 17	14,5	L + 29
GUIDE DRUM														
160	UT 160.0	160	161,5			2,5	40	30	44		8,5	L + 17	14,5	L + 29

\* With 1m cable  
 \*\* Diameter with cylindrical Drum Design  
 \*\*\* Diameter by stainless steel ØD1=162,5, ØD2=163,5 ØD1=162,5, ØD2=163,5



# AxisTM160 Motorised Drum

## TM160 Performance Data

Type	POWER	BELT SPEED	ROTATION SPEED	BELT PULL	TORQUE	POWER INPUT AT 400V / 50Hz	DRUM LENGTH	WEIGHT
		v	n2	F	T2		L min.	L=400mm
	[kW]	[m/s]	[1/min]	[N]	[Nm]		[mm]	[kg]
TM160.0	0,09 8-pole	0,06	7	1618	131	0,50	320	30,0
		0,07	8	1283	104			
		0,09	11	989	80			
		0,11	14	784	63			
		0,14	16	648	52			
		0,18	21	508	41			
		0,23	27	396	32			
TM160.0	0,12 4-pole	0,29	34	310	25	0,40	320	30,0
		0,12	14	1018	82			
		0,15	18	807	65			
		0,19	23	623	50			
		0,24	29	493	40			
		0,29	35	408	33			
		0,38	44	320	26			
TM160.0	0,18 4-pole	0,48	57	249	20	0,55	320	30,0
		0,61	73	195	16			
		0,12	14	1549	125			
		0,15	17	1228	99			
		0,19	22	947	76			
		0,24	28	751	61			
		0,29	34	620	50			
TM160.0	0,25 4-pole	0,37	44	486	39	0,80	320	31,0
		0,47	56	379	31			
		0,61	72	297	24			
		0,15	17	1718	139			
		0,19	22	1325	107			
		0,24	28	1050	85			
		0,29	34	867	70			
TM160.0	0,37 4-pole	0,37	43	680	55	1,10	320	31,0
		0,47	56	530	43			
		0,60	71	416	34			
		0,19	22	1947	157			
		0,24	28	1543	125			
		0,29	34	1275	103			
TM160.0	0,55 4-pole	0,37	44	999	81	1,60	320	31,5
		0,47	56	779	63			
		0,61	72	611	49			
		0,29	34	1929	156			
TM160.0	0,75 2-pole	0,36	43	1512	122	1,90	320	32,0
		0,47	55	1179	95			
		0,60	70	924	75			
		0,37	44	2009	162			
		0,47	56	1592	129			
		0,57	67	1315	106			
TM160.0		0,73	86	1031	83			
		0,93	110	804	65			
		1,19	141	630	51			

- alternative performance data and speeds on request
- indication of weight incl. oil filling (ready for operating)
- additional weight: approx. 3kg for 100mm add. length
- with brake mounting L min. dimension raises up 55mm

# Axis160 Design & Options

## Standard Configuration

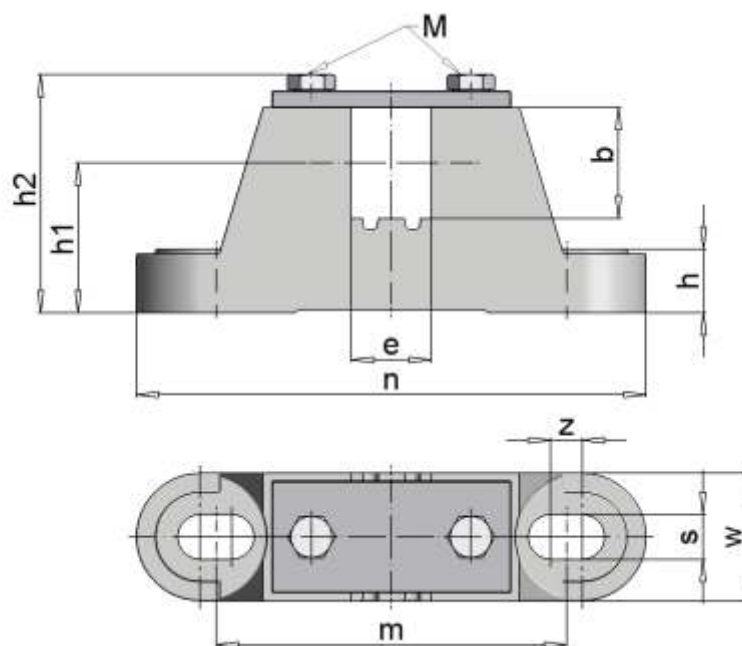
- Crowned shell, mild steel with rust protection paint
- Bearing covers made of aluminium
- Shafts made of mild steel with rust protection paint
- Helical gear unit with steel toothing (quiet)
- IP65 Protection rating
- Straight cable gland with 1m cable

## Options

- Internal brake
- Terminal box connection
- Angular cable gland (with 1m cable)
- Angular cable gland stainless steel (with 1m cable)
- Right angled-straight cable gland (with 1m cable)
- Mechanical backstop
- Sprocket / toothed belt disc
- Sensor bearing unit (rotary encoder)
- Cylindrical drum shell, zinc coated (customised)
- Stainless steel design
- Thermal overload protection
- IP66 protection
- Suitable for frequency converter use
- For modular plastic conveyor belts and grooved rubber lagging
- Terminal box design in stainless steel
- Vertical mounting (should be stated in the order)
- Food-safe lubricant
- Single-phase motors on request

Alternative custom designs on request - please enquire.

## TM160 Clamping Bearing



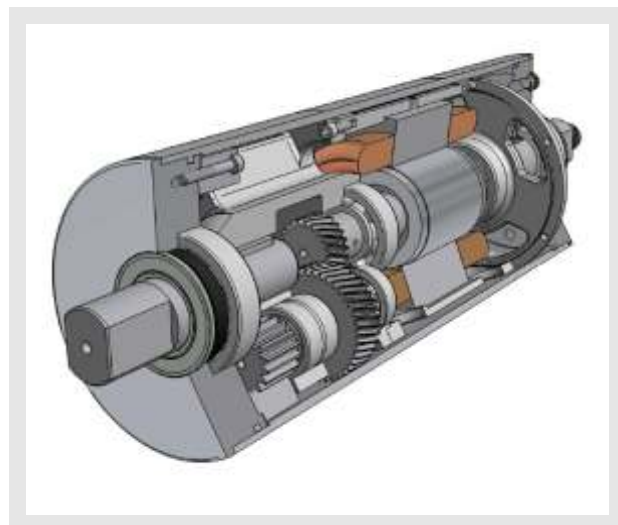
dimensions in mm

DRUM TYPE	CLAMPING BEARING	d	e	h	h1	h2	m	n	s	w	z	M	MATERIAL	ca. kg
160.0	EL40/30 A	40	30	20	47	78,5	110	160	14	40	10	M8	Cast Iron	1,5

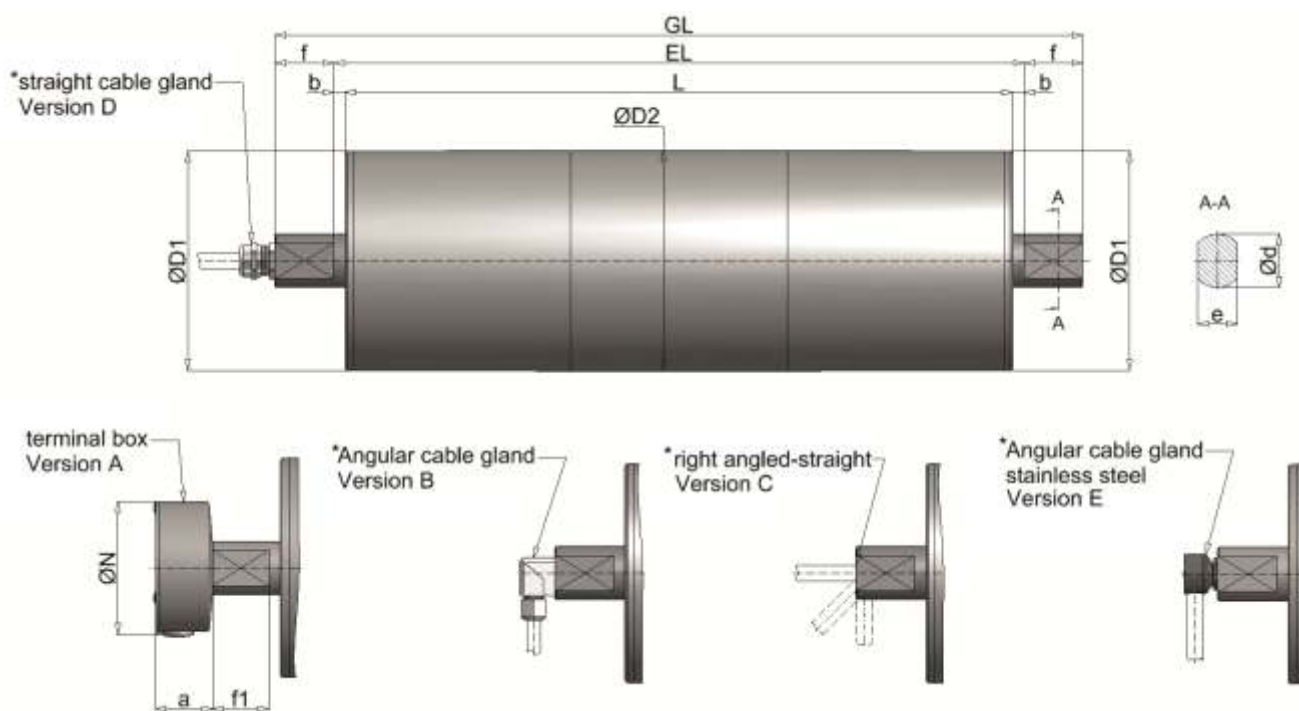
# AxisTM165 Motorised Drum

## General Features

- Diameter Ø165mm
- Heavy duty helical gear unit with steel toothing
- Standard length from 400mm to 1350mm
- Three-phase motor
- 370 Watt to 3000 Watt input power
- Insulation class F
- Mild steel or stainless steel construction
- Lubricated with synthetic oil
- Straight, angular cable gland or terminal box connection
- Special options available
- Quality European manufacture



## TM165 Dimensions



Dimensions in mm

DRUM MOTOR										STANDARD IP66	
Size	Type	Ø D1	Ø D2**	a	Ø N	Ø d	e	f	f1	b	EL
165	TM 165.1	164	165	43	100	40	30	44	42	8,5	L + 17
GUIDE DRUM											
165	UT 165.1	164	165			40	30	44		8,5	L + 17

\* With 1m cable

\*\* Diameter with cylindrical drum design

# AxisTM165 Motorised Drum

## TM165 Performance Data

Type	POWER	BELT SPEED	ROTATION SPEED	BELT PULL	TORQUE	POWER INPUT AT 400V / 50Hz	DRUM LENGTH	WEIGHT
		v	n2	F	T2		L min.	L=500mm
	[kW]	[m/s]	[1/min]	[N]	[Nm]	[A]	[mm]	[kg]
TM165.1	0,37 8-pole	0,19	22	1911	158	1,50	400	44,0
		0,24	27	1573	130			
		0,28	33	1315	108			
		0,33	39	1111	92			
		0,39	45	946	78			
		0,46	53	810	67			
		0,54	63	682	56			
		0,66	76	562	46			
		0,79	91	470	39			
		0,93	108	397	33			
		1,09	127	338	28			
		1,28	148	289	24			
TM165.1	0,75 6-pole	0,25	29	2947	243	2,20	400	44,0
		0,31	36	2427	200			
		0,37	43	2028	167			
		0,44	51	1714	141			
		0,51	59	1460	120			
		0,60	69	1249	103			
		0,71	82	1053	87			
		0,87	100	867	71			
		1,04	120	724	60			
		1,23	142	612	51			
		1,44	167	521	43			
		1,68	195	446	37			
TM165.1	1,10 4-pole	0,39	45	2841	234	3,00	400	44,0
		0,47	54	2339	193			
		0,56	65	1955	161			
		0,67	77	1652	136			
		0,78	91	1407	116			
		0,91	106	1204	99			
		1,08	126	1014	84			
		1,32	152	835	69			
		1,58	182	698	58			
		1,86	216	590	49			
		2,19	253	502	41			
		2,56	296	430	35			
TM165.1	1,50 4-pole	0,56	65	2656	219	3,60	425	47,0
		0,67	77	2245	185			
		0,78	91	1911	158			
		0,92	106	1636	135			
		1,09	126	1378	114			
		1,32	153	1135	94			
		1,58	183	949	78			
		1,87	217	802	66			
		2,20	254	683	56			
		2,57	297	584	48			

# AxisTM165 Motorised Drum

Type	POWER	BELT SPEED	ROTATION SPEED	BELT PULL	TORQUE	POWER INPUT AT 400V / 50Hz	DRUM LENGTH	WEIGHT
		v	n2	F	T2		L min.	L=500mm
	[kW]	[m/s]	[1/min]	[N]	[Nm]	[A]	[mm]	[kg]
TM165.1	2,20 2-pole	0,78	91	2805	231	4,30	425	47,0
		0,95	110	2310	191			
		1,14	132	1931	159			
		1,35	156	1632	135			
		1,58	183	1389	115			
		1,85	214	1189	98			
		2,20	254	1002	83			
		2,67	309	825	68			
		3,19	369	690	57			
		3,78	437	583	48			
		4,43	513	496	41			
		5,18	600	425	35			
TM165.1	3,00 2-pole	1,13	132	2656	219	6,80	492	48,0
		1,34	156	2245	185			
		1,57	183	1911	158			
		1,83	214	1636	135			
		2,18	254	1378	114			
		2,64	309	1135	94			
		3,16	369	949	78			
		3,74	437	802	66			
		4,39	513	683	56			
		5,13	600	584	48			

- alternative performance data and speeds on request
- indication of weight incl. oil filling (ready for operating)
- additional weight: approx. 3kg for 100mm add. length
- with brake mounting L min. dimension raises up 110mm

## Standard Configuration

- Crowned shell, mild steel with rust protection paint
- Bearing covers made of aluminium
- Shafts made of mild steel with rust protection paint
- Helical gear unit with steel toothing (quiet)
- IP66 protection rating
- Straight cable gland with 1m cable

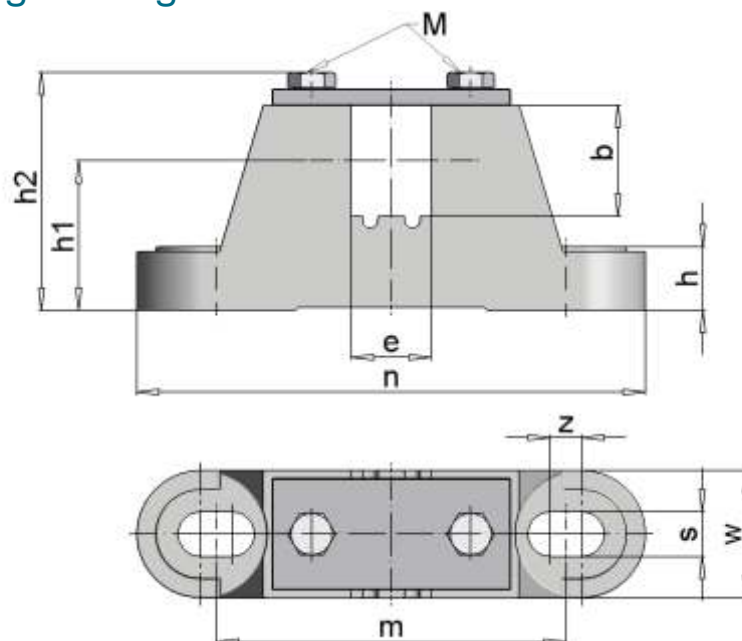
## Options

- Internal brake
- Terminal box connection
- Angular cable gland (with 1m cable)
- Angular cable gland stainless steel (with 1m cable)
- Right angled-straight cable gland (with 1m cable)
- Mechanical backstop
- Sprocket / toothed belt disc
- Sensor bearing unit (rotary encoder)
- Cylindrical drum shell, coated, zinc plated (customised)
- Stainless steel design
- Thermal overload protection
- IP67 protection
- Suitable for frequency converter use
- For modular plastic conveyor belts and grooved rubber lagging
- Terminal box design in stainless steel
- Vertical mounting (should be stated in the order)
- Food-safe lubricant
- Single-phase motors on request

Alternative custom designs also available - please enquire

# AxisTM165 Motorised Drum

## TM165 Clamping Bearing



dimensions in mm

DRUM TYPE	CLAMPING BEARING	d	e	h	h1	h2	m	n	s	w	z	M	MATERIAL	ca. kg
TM/UT160.0	EL40/30 A	40	30	20	47	78,5	110	160	14	40	10	M8	Cast Iron	1,5



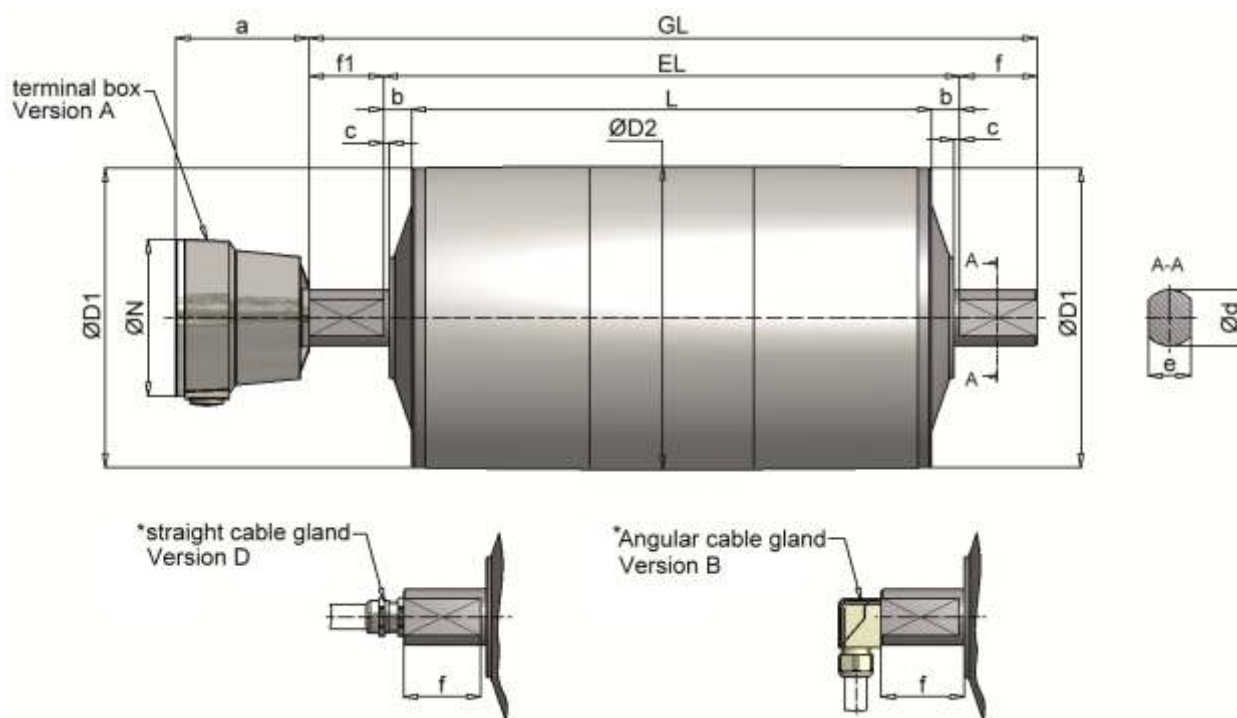
# AxisTM216 Motorised Drum

## General Features

- Diameter Ø216mm
- High duty helical gear unit with steel toothing
- Standard length from 400mm to 1350mm
- Three-phase motor
- 370 Watt to 3000 Watt input power
- Insulation class F
- Mild steel or stainless steel construction
- Lubricated with synthetic oil
- Straight or angular gland or terminal box connection
- Special options available
- Quality European manufacture



## TM216 Dimensions



dimensions in mm

DRUM MOTOR											STANDARD IP65		OPTIONAL IP66		OPTIONAL IP67	
Size	Type	ØD1*	ØD2**	a	ØN	c	Ød	e	f	f1	b	EL	b	EL	b	EL
216	TM 216.0	213,5	216	95	112	3	40	30	45	45			20	L + 40	on request	
216	TM 216.1	213,5	216			3	40	30	55	55	20	L + 40	20	L + 40	37	L + 74
GUIDE DRUM																
216	UT 216.0	213,5	216			3	40	30	45				20	L + 40	on request	
216	UT 216.1	213,5	216			3	40	30	55		20	L + 40	20	L + 40	37	L + 74

\* With 1m cable

\*\* Diameter with cylindrical drum design

# AxisTM216 Motorised Drum

## TM216 Performance Data

Type	POWER	BELT SPEED	ROTATION SPEED	BELT PULL	TORQUE	POWER INPUT AT 400V / 50Hz	DRUM LENGTH	WEIGHT
		v	n2	F	T2		L min.	L=500mm
	[kW]	[m/s]	[1/min]	[N]	[Nm]	[A]	[mm]	[kg]
TM216.0	0,37 8-pole	0,25	22	1460	158	1,50	400	50
		0,31	27	1202	130			
		0,37	33	1005	108			
		0,44	39	849	92			
		0,51	45	723	78			
		0,60	53	619	67			
		0,71	63	521	56			
		0,86	76	429	46			
		1,03	91	359	39			
		1,22	108	303	33			
		1,43	127	258	28			
		1,67	148	221	24			
TM216.0	0,75 6-pole	0,33	29	2251	243	2,20	400	50
		0,40	36	1854	200			
		0,48	43	1549	167			
		0,57	51	1309	141			
		0,67	59	1115	120			
		0,79	69	954	103			
		0,93	82	804	87			
		1,13	100	662	71			
		1,36	120	553	60			
		1,60	142	468	51			
		1,88	167	398	43			
		2,20	195	341	37			
TM216.1	1,50 4-pole	0,33	29	4604	497	3,20	420	57,0
		0,37	33	4016	434			
		0,48	42	3134	338			
		0,60	53	2504	270			
		0,86	76	1749	189			
		1,17	104	1279	138			55,0
		1,34	119	1116	120			
		1,72	152	871	94			
		2,16	191	696	75			
TM216.1	2,20 4-pole	0,47	42	4679	505	4,80	420	59,0
		0,59	52	3738	404			
		0,84	75	2610	282			
		1,15	102	1909	206			
		1,32	117	1665	180			
		1,69	150	1300	140			57,0
		2,12	187	1038	112			
TM216.1	3,00 4-pole	0,85	75	3547	383	6,60	450	59,0
		1,16	102	2594	280			57,0
		1,33	117	2263	244			
		1,70	150	1766	191			
		2,13	188	1411	152			

- alternative performance data and speeds on request
- indication of weight incl. oil filling (ready for operating)
- additional weight: approx. 5kg for 100mm add. length
- with brake mounting L min. dimension raises up 100mm

# AxisTM216 Design & Options

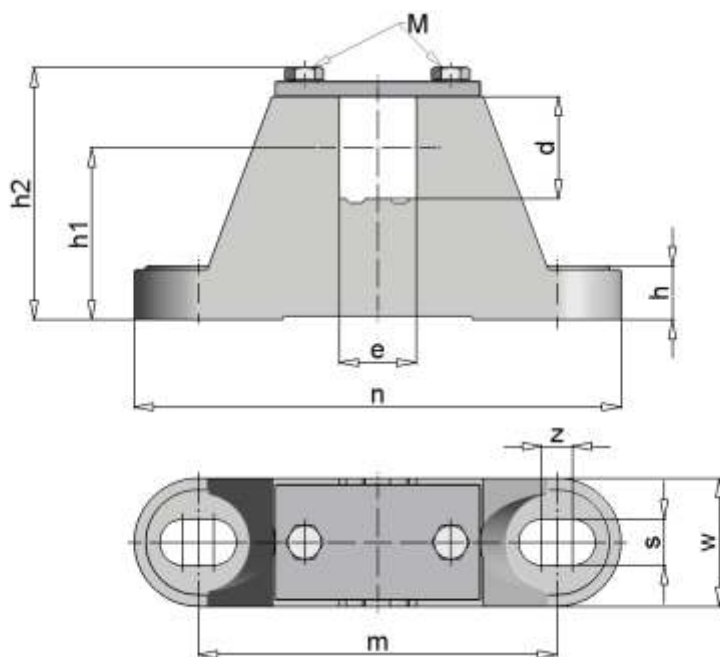
## Standard Configuration

- Crowned shell, mild steel with rust protection paint
- Bearing covers made of cast iron
- Shafts made of mild steel with rust protection paint
- Helical gear unit with steel toothing (quiet)
- IP65 Protection rating
- Terminal box

## Options

- Internal brake
  - Angular cable gland (with 1m cable)
  - Straight cable gland with 1m cable
  - Mechanical Backstop
  - Sprocket / toothed belt disc
  - Sensor bearing unit (rotary encoder)
  - Cylindrical drum shell, coated, zinc plated (customised)
  - Stainless steel design
  - Thermal overload protection
  - IP67 Protection
  - Suitable for frequency converter use
  - Terminal box design in stainless steel
  - Vertical mounting
  - Food-safe lubricant
- Alternative custom designs also available - please enquire.

## TM216 Clamping Bearing



dimensions in mm

DRUM TYPE	CLAMPING BEARING	d	e	h	h1	h2	m	n	s	w	z	M	MATERIAL	ca. kg
TM/UT 216.0	EL40/30 A	40	30	20	47	76	110	160	14	40	10	M8	Cast iron	1,5
TM/UT 216.1	EL40/30 B	40	30	21	67	102,5	140	190	18	50	12	M8		2,8

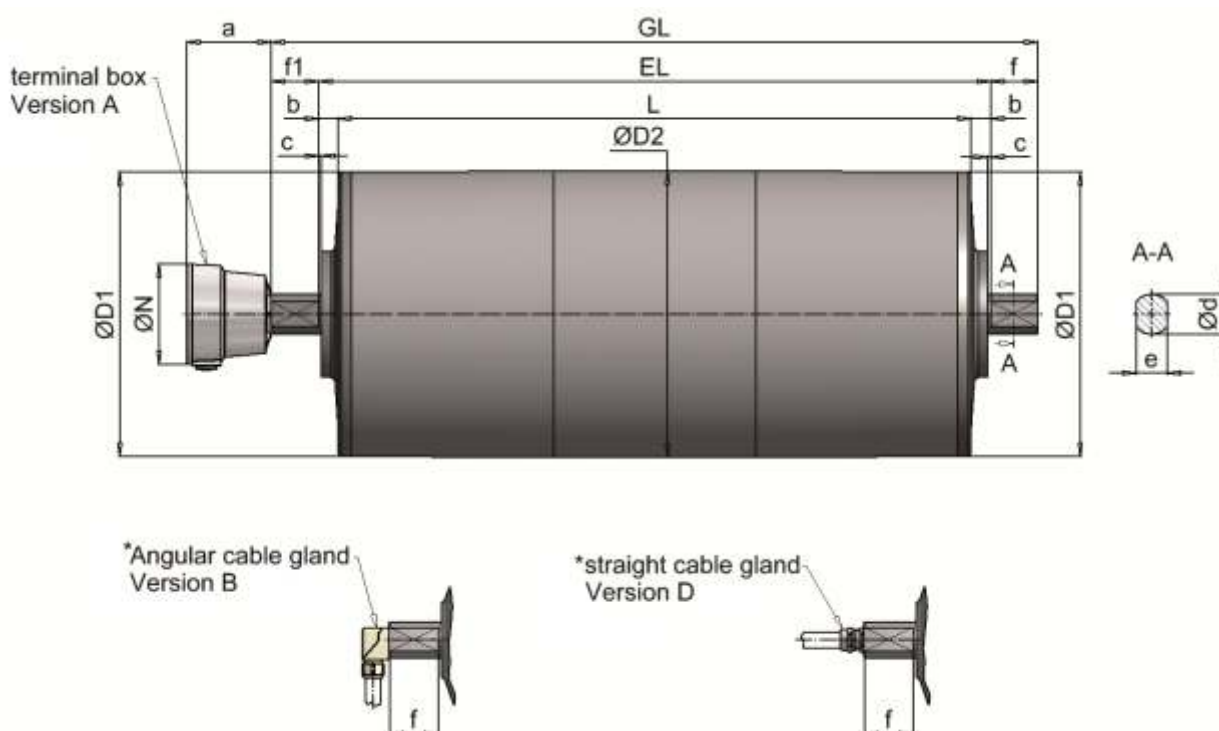
# AxisTM321 Motorised Drum

## General Features

- Diameter Ø321mm
- High duty helical gear unit with steel toothing
- Standard length from 520mm to 1600mm
- Three-phase motors
- 1.5 Kilowatt to 7.5 Kilowatt input power
- Insulation class F
- Mild steel or stainless steel construction
- Angular, straight cable gland or terminal box connection
- Lubricated with synthetic oil
- Special options available
- Quality European manufacture



## TM321 Dimensions



dimensions in mm

DRUM MOTOR											STANDARD IP66		OPTIONAL IP67	
Size	Type	ØD1	ØD2**	a	Ø N	c	Ø d	e	f	f1	b	EL	b	EL
321	TM 321.0	318	321	95	112	3	40	30	55	55	20	L + 40	45	L + 90
321	TM 321.1	318	321			3	45	35	53	53	22	L + 44	43	L + 86
GUIDE DRUM														
321	UT 321.0	318	321			3	40	30	55		20	L + 40	45	L + 90
321	UT 321.1	318	321			3	35	35	53		22	L + 44	43	L + 86

\* With 1m cable

\*\* Diameter with cylindrical drum design



# AxisTM321 Motorised Drum

## TM321 Performance Data

Type	POWER	BELT SPEED	ROTATION SPEED	BELT PULL	TORQUE	POWER INPUT AT 400V / 50Hz	DRUM LENGTH	WEIGHT
		v	n2	F	T2		L min.	L=600mm
	[kW]	[m/s]	[1/min]	[N]	[Nm]		[A]	[mm]
TM321.0	1,50 4-pole	0,48	29	3098	497	3,20	520	95
		0,56	33	2702	434			
		0,71	42	2109	338			
		0,89	53	1685	270			
		1,11	66	1356	218			
		1,27	76	1177	189			
		1,74	104	861	138			
		2,00	119	751	120			
		2,34	139	641	103			
TM321.1	2,20 4-pole	0,39	23	5622	902	4,80	550	120
0,48		28	4593	737	100			
0,70		42	3148	505				
0,87		52	2516	404				
1,09		65	2025	325				
1,25		75	1756	282				
1,71		102	1285	206				
1,96		117	1121	180				
2,30		137	957	154				
TM321.1	3,00 4-pole	0,60	36	4986	800	6,60	550	125
0,74		44	4070	653	105			
0,84		50	3564	572				
1,09		65	2751	442				
1,26		75	2387	383				
1,72		102	1746	280				
1,97		117	1523	244				
TM321.1	4,00 4-pole	0,73	44	5465	877	9,00	550	130
1,08		64	3694	593	110			
1,33		79	3019	484				
1,66		99	2411	387				
2,03		121	1968	316				
TM321.1	5,50 4-pole	1,04	62	5282	848	11,50	680	140
		1,28	76	4312	692			
		1,65	98	3324	533			
		2,04	121	2697	433			
		2,68	159	2054	330			
		3,28	195	1677	269			
TM321.1	7,50 4-pole	1,65	98	4532	727	15,50	680	150
		2,04	121	3678	590			
		2,68	159	2801	450			
		3,28	195	2287	367			

- Alternative performance data and speeds on request
- Indication of weight incl. oil filling (ready for operating)
- Additional weight: approx. 6 kg for 100mm add. length
- With brake mounting L min. dimension raises up 130mm

# AxisTM321 Design & Options

## Standard Configuration

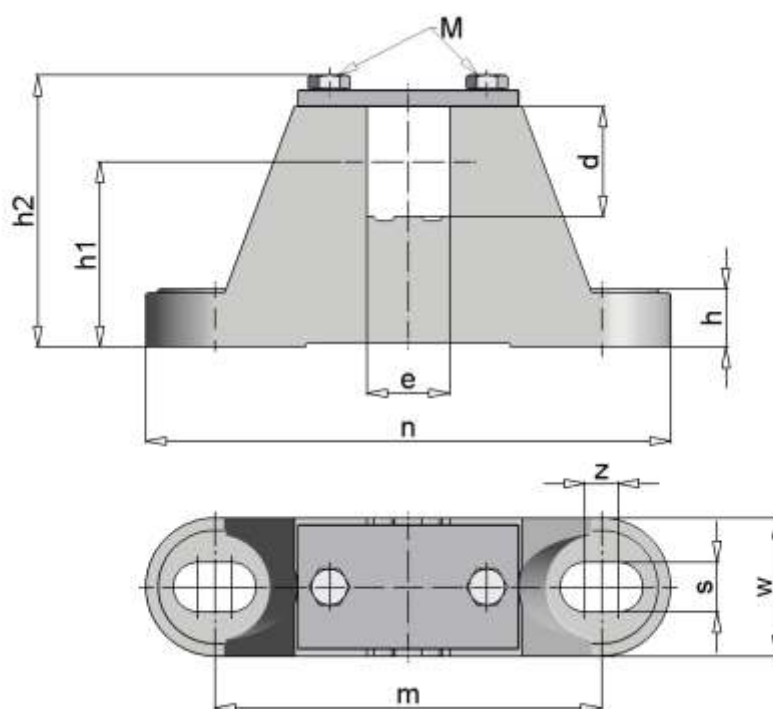
- Crowned shell, mild steel with rust protection paint
- Bearing covers made of cast iron
- Shafts made of mild steel with rust protection paint
- Helical gear unit with steel toothing (quiet)
- IP66 protection rating
- Terminal box
- Colour RAL 2004

## Options

- Internal brake
- Angular cable gland (with 1m cable)
- Straight cable gland (with 1m cable)
- Mechanical Backstop
- Sprocket / toothed belt disc
- Cylindrical drum shell, rubber coated, zinc plated (customised)
- Stainless steel design
- Thermal overload protection
- IP66/67 Protection
- Suitable for frequency converter use
- Terminal box design in stainless steel
- Vertical mounting
- Food-safe lubricant

Alternative custom designs also available - please enquire

## TM321 Clamping Bearing



dimensions in mm

DRUM TYPE	CLAMPING BEARING	d	e	h	h1	h2	m	n	s	w	z	M	MATERIAL	Kg ca. kg
TM/UT 321.0	EL40/30 B	40	30	21	67	102,5	140	190	18	50	12	M8	Cast Iron	2,8
TM/UT 321.1	EL45/35	45	35	21	67	105	140	190	18	50	12	M8		2,8

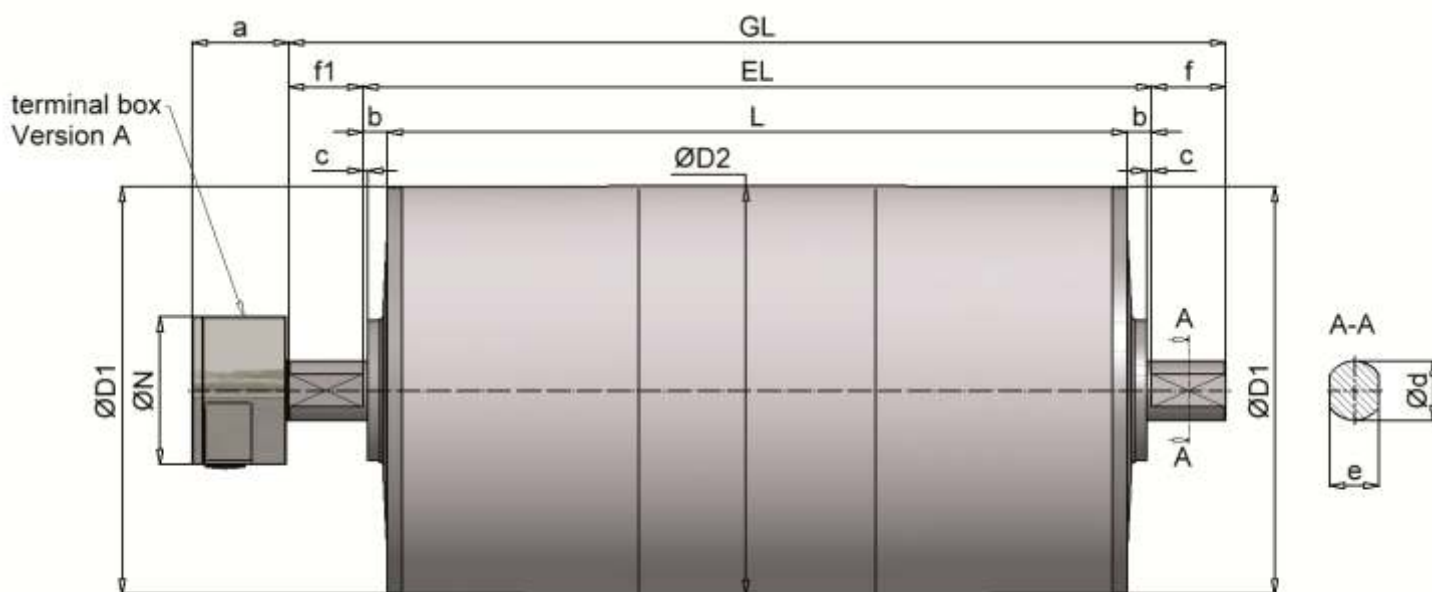
# AxisTM415 Motorised Drum

## General Features

- Diameter Ø415mm
- Helical gear unit with steel tothing
- Standard length from 540mm to 1400mm
- Three-phase motors
- 3 kilowatt to 15 kilowatt input power
- Insulation class F
- Mild steel or stainless steel construction
- Lubricated with synthetic oil
- Terminal box connection
- Special options available
- Quality European manufacture



## TM415 Dimensions



Dimensions in mm

DRUM MOTOR											STANDARD IP66		OPTIONAL IP67	
Size	Type	Ø D1	Ø D2*	a	Ø N	c	Ø d	e	f	f1	b	EL	b	EL
415	TM 415.0	413	415	95	112	3	45	35	53	53	22	L + 44	32	L + 64
415	TM 415.1	413	415	100	150	5	60	50	75	75	25	L + 50	35	L + 70
GUIDE DRUM														
415	UT 415.0	413	415			3	45	35	53		22	L + 44	32	L + 64
415	UT 415.1	413	415			5	60	50	75		25	L + 50	35	L + 70

\* Diameter with cylindrical drum design

# AxisTM415 Motorised Drum

## TM415 Performance Data

Type	POWER	BELT SPEED	ROTATION SPEED	BELT PULL	TORQUE	POWER INPUT AT 400V / 50Hz	DRUM LENGTH	WEIGHT
		v	n2	F	T2		L min.	L=750mm
	[kW]	[m/s]	[1/min]	[N]	[Nm]		[mm]	[kg]
TM415.0	3,00 4-pole	0,78	36	3857	800	3,20	550	160
		0,95	44	3148	653			
		1,32	61	2276	472			
		1,61	74	1858	386			
TM415.1	4,00 4-pole	0,60	28	6678	1386	9,00	750	275
0,84		39	4746	985				
TM415.0		0,95	44	4227	877		550	170
		1,31	60	3056	634			
		1,60	74	2495	518			
		2,08	96	1923	399			
TM415.1	5,50 4-pole	0,87	40	6344	1316	11,50	750	290
		1,04	48	5267	1093			
		1,29	59	4266	885			
		1,56	72	3530	733			
		1,72	79	3201	664			
		2,17	100	2534	526			
TM415.1	7,50 4-pole	1,04	48	7182	1490	15,50	750	300
		1,29	59	5818	1207			
		1,56	72	4814	999			
		1,72	79	4365	906			
		2,17	100	3456	717			
TM415.1	10,00 4-pole	1,28	59	7811	1621	21,00	750	320
		1,55	71	6464	1341			
		1,71	79	5861	1216			
		2,16	99	4640	963			
TM415.1	15,00 4-pole	1,71	79	8792	1824	29,50	750	360
		2.16	99	6959	1444			

- alternative performance data and speeds on request
- indication of weight incl. oil filling (ready for operating)
- additional weight: approx. 10,0kg for 100mm add. length
- with brake mounting L min. dimension raises up 200mm



# AxisTM415 Design & Options

## Standard Configuration

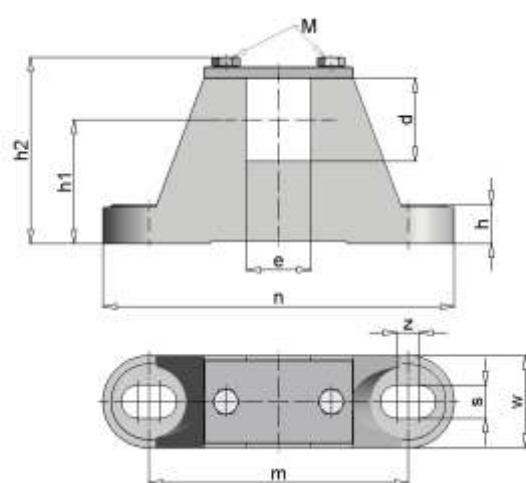
- Crowned shell, mild steel with rust protection paint
- Bearing covers made of cast iron
- Shafts made of mild steel with rust protection paint
- Helical gear unit with steel toothing (quiet)
- IP66 protection rating
- Terminal box
- Colour RAL 2004

## Options

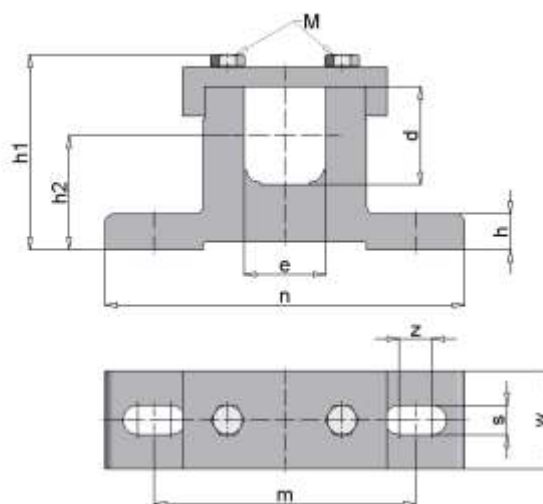
- Internal brake
- Mechanical backstop
- Sprocket / toothed belt disc
- Cylindrical drum shell, rubber coated, zinc plated (customised)
- Stainless steel design
- Thermal contact
- IP67 protection
- Suitable for frequency converter use
- Terminal box design in stainless steel
- Vertical mounting (should be stated in the order)
- Food-safe lubricant

Alternative custom designs also available - please enquire

## TM415 Clamping Bearing



dimensions in mm



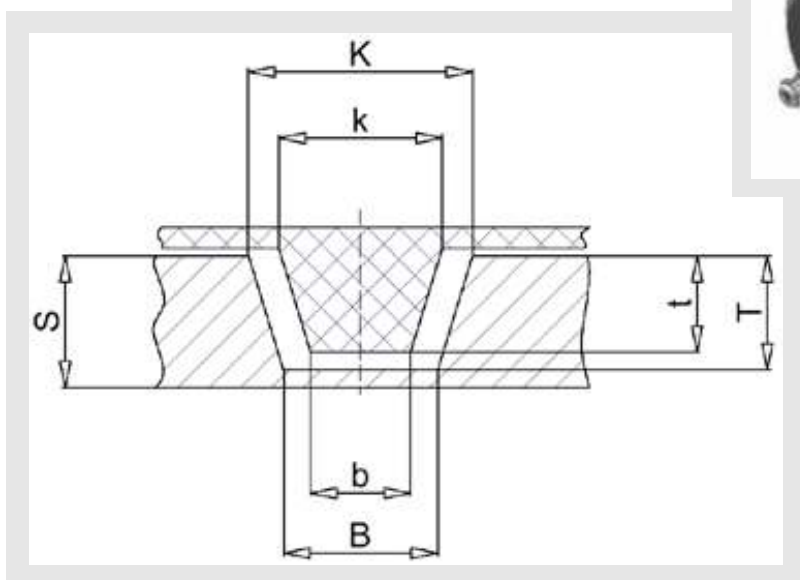
DRUM TYPE	CLAMPING BEARING	d	e	h	h1	h2	m	n	s	w	z	M	MATERIAL	ca. kg
TM/UT 415.0	EL45/35	45	35	21	67	105	140	190	18	50	12	M8	Cast iron	2,8
TM/UT 415.1	EL60/50	60	50	22	70	119,5	160	220	18	60	20	M12	Steel	5



# Axis™ Series Roller Coating Options

## Rubber Coated Drum Motors with Vee Groove

With a Vee groove in the rubber lagging of the drum motor you can use conveyor belts with a guided tracking strip. With this feature, good central running of the conveyor belt can be achieved. We can create grooves suitable for a wide range of guide profiles



## Vee Groove Dimensions

V -NUT / V -	S <sub>MIN.</sub> [mm]	S <sub>MAX.</sub> [mm]	GROOVE			VEE GUIDE		
			K [mm]	B [mm]	T [mm]	k [mm]	b [mm]	t [mm]
K6	6	8	10	8	5	6	4	4
K8	6	8	12	8	6	8	5	5
K10	8	10	14	10	7	10	6	6
K13	10	1	17	11	9	13	7.5	8
K15	10	12	19	13	9	15	9.5	8
K17	12	14	21	13	12	17	9.5	11

# Axis™ Series Roller Coating Options

## Rubber Coatings and Sprockets for Plastic Modular Belts

We can provide our drum motors with profiled rubber laggings or with sprockets to drive modular belts. Profiles to suit products from many leading manufacturers such as, Habasit, Intralox and Siegling are available.



# Axis™ Series Electrical Information

## Operation voltages

For the design of the motor winding we require information on operating voltage and starting method.

The standard winding design for drum motors is as following:

- Motors up to 2.2kW for 230/400V delta/star
- Motors from 3.0kW for 400V delta.

Special voltages and frequencies can be supplied on request.

## Motor protection

Check whether the voltage and connections of the supplied equipment comply with the available voltage on the place of installation. If the above does not match, the connections can be changed on the terminal block if fitted.

All conveyor drum motors must be fitted with a ground terminal (VDE 0530).

## Thermistor (internal) (PTC) in combination with a trip device.

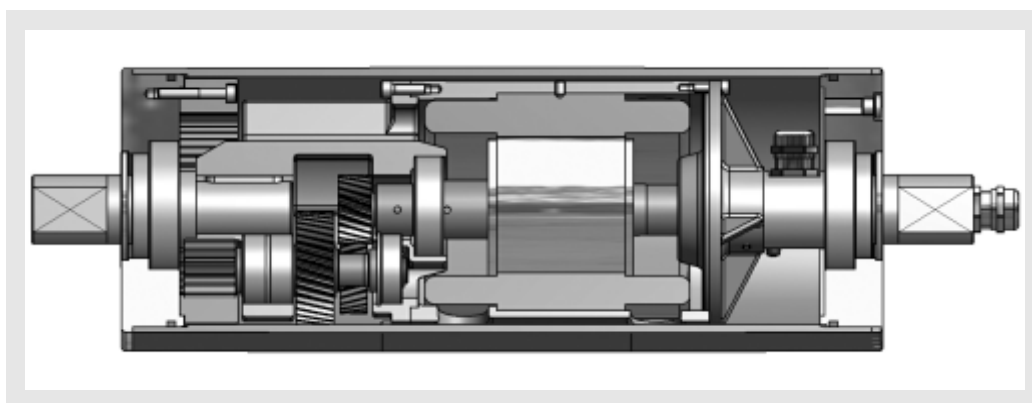
Drum motors are available with winding thermostats (internal) (WT's) that open or close the stator windings. This disconnects the motor on overload via a relay.

A motor protection switch (external) with bi-metal contacts, which opens within admissible current input is also available.

# Axis™ Series Lubrication

## Oil Types

All conveyor drum motors are oil filled before delivery. Standard factory filling is gear oil SAE 100 with the technical specification: Viscosity cST/40°C or Engler/50°, freezing point is -20°. The oil is for operating temperatures covering -20°C to +50°C. If other oil types are used, it is essential to ensure that the oil contains no additives which may damage the motor insulation. Furthermore, oil types containing graphite, molybdenum disulphide or other electrical conduction components may NOT be used as this would cause damage to the motor. NSF/H1-design (food industry) also available on request.

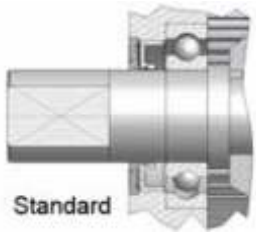

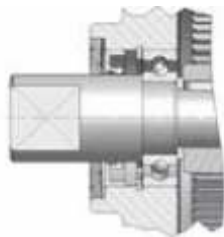







## Oil Change

After 200 – 300 operating hours an oil change is recommended. After the first oil change, it is only necessary to change the oil after every 10,000 operating hours. The drain plugs are located in the drum flange adjacent to the terminal box. In order to drain the oil, remove both screw plugs, and rotate the drum until the plug nearest the circumference of the drum faces downward. This allows the oil to drain out.

**ATTENTION:** It is important that the marking “top” on the connection shaft or output site is positioned upright and horizontal or not more than 90° from the horizontal lubrication line; otherwise there will be no cooling and lubrication.

# Axis™ Series Sealing IP65-IP67

Type	IP 65	IP 66	IP 67
TM82 / TM111 / TM138 / TM165 / TM216.0		 Standard	<i>on request</i>
TM135 / TM160	 Standard		<i>on request</i>
TM216.1	 Standard		
TM321 / TM415		 Standard	

## Axis Ingress Protection Notes

Ingress Protection (IP) ratings are developed by the European Committee for Electro Technical Standardization (CENELEC) (NEMA IEC 60529 Degrees of Protection Provided by Enclosures - IP Code), specifying the environmental protection the enclosure provides.

IP First number - Protection against solid objects

IP Second number - Protection against liquids

- IP65 - Totally protected against dust, protected against low pressure jets of water from all directions - limited ingress.
- IP66 - Totally protected against dust, protected against temporary flooding of water - limited ingress permitted.
- IP67 - Totally protected against dust, protected against the effect of immersion between 15 cm and 1 m

# Axis™ Series Drive Selection

Our technical staff are able to assist with drive selection ensuring your drive has the power requirements to meet the demands of the application and ensure a long life solution. Special consideration needs to be given to the following.

## Drive Selection Considerations

Conveyor Type:	Roller Bed <input type="checkbox"/>	Slider Bed <input type="checkbox"/>	Bulk Handling <input type="checkbox"/>
Conveyor Length in meters:			
Target Belt Speed: [m/sec]			
Weight of Items in kg per M of belt:			
Belt Width:			
Belt Weight in Kg per M2:			
Belt Friction Factor for Slider Bed: (0.2-0.6)			
Conveyor Angle: (degrees)			
Duty on accumulation*: (0-2)			
<small>*(Coefficient of friction between belt and transported materials. Not relevant if there is no product accumulation on the belt)</small>			
Operating Duty: ( Hours per day)	<3hrs	<input type="checkbox"/>	<8hrs <input type="checkbox"/>
	<12hrs	<input type="checkbox"/>	>16hrs <input type="checkbox"/>
Conveyor Loading Conditions:	Uniformly Loaded Belt	<input type="checkbox"/>	
	Irregularly Loaded Belt	<input type="checkbox"/>	
	Point or Shock Loading	<input type="checkbox"/>	

Please scan and fill in the relevant details. Return this to us via fax or email and we will make a recommendation on your required drum motor specifications.

Fax: 0064 3 218 4164

Email: [sales@southquip.co.nz](mailto:sales@southquip.co.nz)



# Axis Drum Motor

## Order / Quotation Request Form

To:

Southquip Industrial  
9 Wood street  
Invercargill  
New Zealand  
**Phone:** +64 3 218 4168  
**Fax:** +64 3 218 4164  
**Email:** sales@southquip.co.nz  
**Web:** www.southquip.co.nz

Customer Details:

Company: \_\_\_\_\_  
Contact Name: \_\_\_\_\_  
Phone: \_\_\_\_\_  
Fax: \_\_\_\_\_  
Email: \_\_\_\_\_  
Street: \_\_\_\_\_  
City: \_\_\_\_\_  
Country: \_\_\_\_\_

### Drum Motor Design

Drum Motor Model:				
Drum Shell:	Crowned	<input type="checkbox"/>	Cylindric	<input type="checkbox"/>
Drum Face Width mm: ( Dimension L)				
Drum Motor Construction:	Mild Steel/ Alloy	<input type="checkbox"/>	Stainless	<input type="checkbox"/>
Power: [kW]				
Belt Speed: [m/sec]				

### Electrical Information

Protection Class:	IP65	<input type="checkbox"/>	IP66	<input type="checkbox"/>	IP67	<input type="checkbox"/>
Iso Class:	F					
Voltage:						
No. of Phases:	Three Phase	<input type="checkbox"/>	Single Phase	<input type="checkbox"/>		
Frequency: [hz]						
Frequency Inverter VSD operation:	Yes	<input type="checkbox"/>	No	<input type="checkbox"/>		
	VSD Output Voltage:					
	Epected Frequency Range: [hz]					

### Mounting Dimensions

Shaft Mounting Dimensions:						
Direction of Spanner Mounting:	Horizontal	<input type="checkbox"/>	Verticle	<input type="checkbox"/>		
Spanner Length mm: (Mounting Length Dimension EL)						
Version Of Connection:	Terminal Box Version A* *TM Series Only	<input type="checkbox"/>	Angular Cable Gland Version B	<input type="checkbox"/>		
	Right Angled Straight Version C	<input type="checkbox"/>	Straight Cable Gland Version D	<input type="checkbox"/>		
	Angular Cable Gland SS Version E	<input type="checkbox"/>	Other	<input type="checkbox"/>		

### TM Series Options

Electromagnetic Brake:	Yes	<input type="checkbox"/>	No	<input type="checkbox"/>
Mechanical Backstop:	Yes	<input type="checkbox"/>	No	<input type="checkbox"/>
Free Direction of Rotation	Clockwise	<input type="checkbox"/>	Anti-Clockwise	<input type="checkbox"/>
Reverse Operation	Yes	<input type="checkbox"/>	No	<input type="checkbox"/>
Rubber Coating	Yes	<input type="checkbox"/>	No	<input type="checkbox"/>

Relevant Notes:

--



## Axis RL Series Motorised Pulleys

The Axis RL Series motorised pulleys serve to create flexible and modular conveyor systems for the movement of pallets or heavy bulk items. The Axis RL series rollers can be configured in a conveyor system spaced with several gravity rollers to eliminate the need to have all rollers driven. They reduce system maintenance because of a life lubricated gearbox and bearings and protected from dust and the elements of an industrial workplace. Because of the simplified electrical systems and reduced mechanical components required the Axis RL89 has been used to overcome many different pallet conveying challenges.

# Axis RL Series Advantages & Applications

## Advantages

1. **Low Maintenance:** Enclosed motorisation is protected from outside influence.
2. **Low Noise:** Enclosed planetary gear drive reduces noise output.
3. **Simple design:** Machined shafts flats and make installation simple when used with our standard adjustable mounting bracket.
4. **Flexible Dimensions:** Standard or custom roller lengths available up to 1600mm wide
5. **Flexible Design:** No need for driving sprockets or chains make integration into unique and challenging applications simple.
6. **Efficiency:** Low power consumption



## Applications

- Bagging Machines
- Pallet Wrapping Turntables
- Pallet Strapping Machines
- Production Machine Exits
- Large Item Production Lines
- Linear Transfers
- Shuttles and Transfer Bridges

# AxisRL89 Motorised Pulley

## General features

- Diameter Ø89mm
- Low noise enclosed planetary drive system
- Roller length from 500mm until 1500mm
- Three phase motors
- 110 watt input power
- Insulation class F
- Galvanised Shell
- Life lubricated with synthetic grease
- Straight cable gland with 3M flying cable



## Axis RL89 Benefits

### Economy

The Axis RL89 requires less additional components when compared to a traditional pallet conveying system. When specifying the Axis RL89 in your pallet conveying system consideration must be given to the following points:

- **Reduced Maintenance:** The gearing, reducer and planetary gears of the Axis RL89 are life lubricated and do not require maintenance.
- **Reduced Components:** No external motor & reducer, chain, sprockets and tensioner.
- **Simplified Conveyor Structure:** Elimination of protection covers enables reduced side frame height.
- **Faster Assembly:** Reduced components allows quicker delivery times and more competitive bids.
- **Faster Installation:** Conveyors can be shipped assembled for easy site installation.
- **Gravity Rollers Construction:** As only the Axis RL89 provides motorisation the free rollers do not require additional sprockets and welded construction to add cost.

### Modularity

- The Axis RL89 has the same diameter as gravity rollers commonly found in the handling market which allows simple retrofitting to existing systems without modification.
- The enclosed drive system allows handling systems to be utilised in protected and aggressive environments. The Axis RL89 requires no grease application and is impervious to dust, particles etc. The Axis RL89 is particularly useful in food safe areas.
- The modular construction of conveyor system using the Axis RL89 allows fast interchangeability of rollers and should a single motor become damaged it can be removed without stopping production or creating down-time.

### Safety

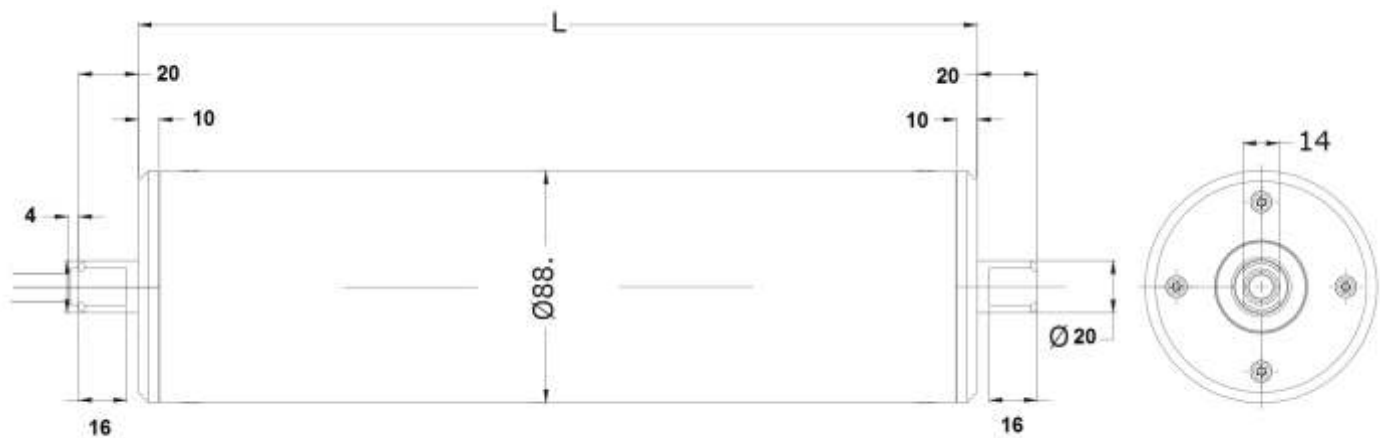
The enclosed drive of the Axis RL89 doesn't present any danger to personal working in the general proximity as no pinch points are created in its operation. This means protective covers and guarding may not be required.

Greased components of a traditional pallet conveying system present contamination issues not present when the Axis RL89 is utilised. The shell can be supplied in galvanized drawn steel or stainless steel for areas food safe requirements.



# AxisRL89 Motorised Pulley

## Axis RL89 Dimensions



## Axis RL89 Performance Data

Type	POWER	SPEED	TORQUE	STARTING TORQUE	NOMINAL TENSION	STARTING TENSION	POWER INPUT 400V (50Hz)	DRUM LENGTH	WEIGHT
	[kW]	[m/s]	[N]	[N]	[Nm]	[Nm]		L min.	L=1200mm
							[A]	[mm]	[kg]
RL89	0,11 2-pole	0,06	31,8	72,5	714	1629	3x230/400V 0,45/0,26	600	14,3
		0,086	22,4	51,0	503	1146			
		0,095	19,9	45,3	447	1018			
		0,12	15,8	35,9	354	807			
		0,135	14,0	31,9	314	716			
		0,15	12,4	28,2	278	634			
		0,17	11,2	25,5	251	573			
		0,19	9,90	22,5	222	505			
		0,22	8,80	20,1	198	453			
		0,25	7,80	17,8	175	400			
		0,36	5,60	12,8	128	288			

## Axis RL89 Length and Load Ratings

LENGTH	MAXIMUM STATIC LOAD
[mm]	[kg]
700	370
800	320
900	280
1000	260
1100	225
1200	210
1400	175

## Axis RL89 Motor Information

MOTOR	SPECIFICATION
Three Phase	-
Absorbed Power	110W
Speed	2500 tr / min
Nominal Torque	0,19Nm
Thermal Protection	225

# AxisRL89 Applications

- Logistics
- Bagging and Product Batching



Aggressive environment application

- Airport Freight
- Production Lines



Production application with turntable

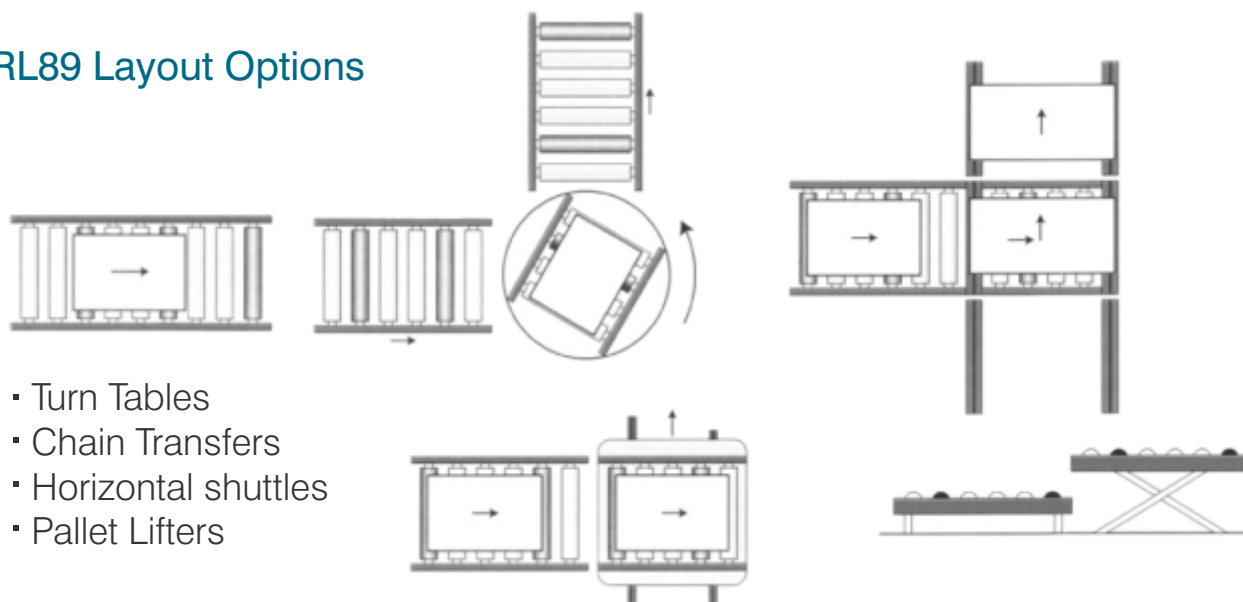


Food production facility where pallets need to be moved without forklift to prevent possible contamination .



Logistics Applications with shuttle transfers

## Axis RL89 Layout Options

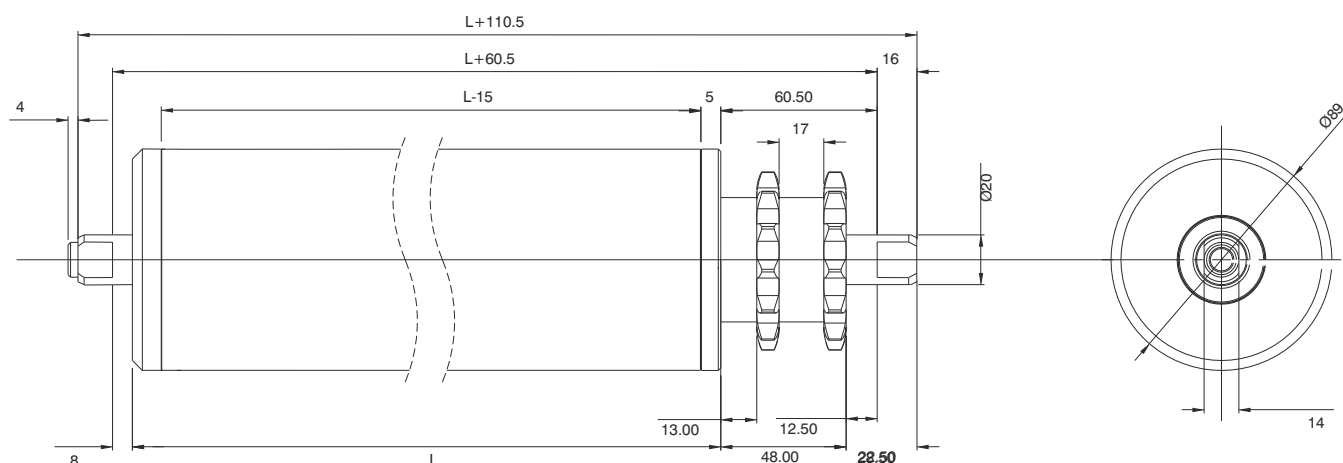


- Turn Tables
- Chain Transfers
- Horizontal shuttles
- Pallet Lifters

## General features

- Welded Drive Sprocket 14T 5/8" Pitch Duplex.
- Zinc Plated Sprocket with precision ball bearing
- Motor Specifications see (RL89 on Page 60)

## Axis RL89 TRC Dimensions

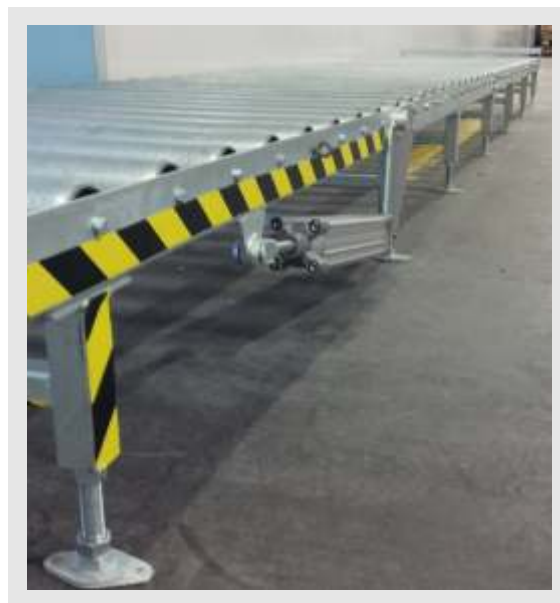


# AxisRL89 Gravity Roller

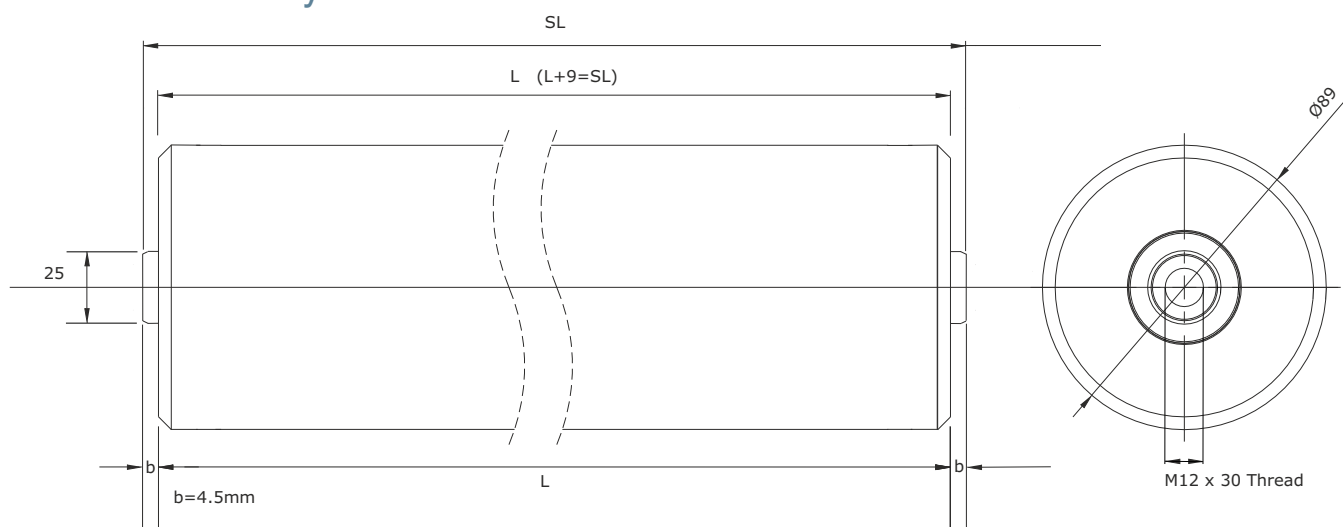
The Axis RL89 gravity roller is designed for use with the RL89 motorised pulley for handling applications. A heavy duty roller with a high static load rating and performance bearings. Standard lengths available up to 1500mm wide.

## General features

- Heavy duty galvanised or stainless steel shell
- Swaged or pressed precision bearing options
- 20mm mild or stainless steel shaft
- M12 x 30 Tapped Shafts



## Axis RL89 Gravity Roller Dimensions





# Axis Pallet Roller

## Order / Quotation Request Form

**To:**

Southquip Industrial  
9 Wood street  
Invercargill  
New Zealand  
**Phone:** +64 3 218 4168  
**Fax:** +64 3 218 4164  
**Email:** sales@southquip.co.nz  
**Web:** www.southquip.co.nz

**Customer Details:**

Company: \_\_\_\_\_  
Handled By: \_\_\_\_\_  
Phone: \_\_\_\_\_  
Fax: \_\_\_\_\_  
Street: \_\_\_\_\_  
City: \_\_\_\_\_  
Country: \_\_\_\_\_

**Pallet Roller Design**

Pallet Roller Model:	RL89	<input type="checkbox"/>	RL89 TRC	<input type="checkbox"/>
Pallet Roller Construction:	Mild Steel/ Galvanised	<input type="checkbox"/>	Stainless Steel	<input type="checkbox"/>
Conveying Speed: [m/sec]				

**Electrical Information**

Protection Class:	IP65			
Iso Class:	F			
Voltage:	230/400	Other	<input type="checkbox"/>	_____
No. of Phases:	Three Phase			
Frequency: [hz]	50			
Frequency Inverter VSD operation:	Yes	<input type="checkbox"/>	No	<input type="checkbox"/>
VSD Output Voltage: [hz]				
Expected Frequency Range: [hz]	-			

**Mounting Dimensions**

Shaft Dimensions:	14 x 20
Version Of Connection:	Straight Cable Gland

**Options**

Electromagnetic Brake:	Yes	<input type="checkbox"/>	No	<input type="checkbox"/>
Rubber Coating	Yes	<input type="checkbox"/>	No	<input type="checkbox"/>

**Application Considerations**

Conveyor Length M:				
Pallet Length:				
Pallet Width:				
Maximum Pallet Weight:				
No. of Pallets per Hour:				
Operating Duty: (Hours per day)	<3hrs	<input type="checkbox"/>	<8hrs	<input type="checkbox"/>
	<12hrs	<input type="checkbox"/>	>16hrs	<input type="checkbox"/>
Number of Cycles (Start/stops) per min:	<1	<input type="checkbox"/>	<2	<input type="checkbox"/>
	<5	<input type="checkbox"/>	<20	<input type="checkbox"/>

Notes:

--



# Axis Design Notes



# Axis Service

## Priority Support



The drum motor is a critical part of your production. We understand its importance to your efficiency and profitability. This is why we offer a priority service package when you require it most.

By holding common spares and replacements in stock we can ship these to you overnight or same day. We can also expedite the production of a replacement drum as required.

## Flexible Shipping



Once your order has completed production we realise how important is to be delivered on time and in perfect condition. We are flexible in our shipping and can dispatch via courier, line haul, airfreight express or sea freight.



## Drum Motor Refurbishment



Axis offer servicing and refurbishment of all types and makes of drum motors. Contact our service department to have your drum motor inspected by our inhouse technicians. We offer oil changes, parts replacements and testing to keep your drum motor operating at peak performance.

## Drum Lagging



Axis can offer relagging of your drum shells with a wide variety of rubber options. We have options in pattern, hardness and thickness. We can also apply food safe lagging via hot vulcanising and cold bonding.



*View our range online*

## Contact Information

Sales and Enquiries

Phone +64 3 218 4168

Fax +64 3 218 4164

Web: [www.southquip.co.nz](http://www.southquip.co.nz)

Email: [sales@southquip.co.nz](mailto:sales@southquip.co.nz)